



Price
£280,000

Freehold

2x  1x  2x 

**Risborough Lane,
Folkestone, Kent, CT20**

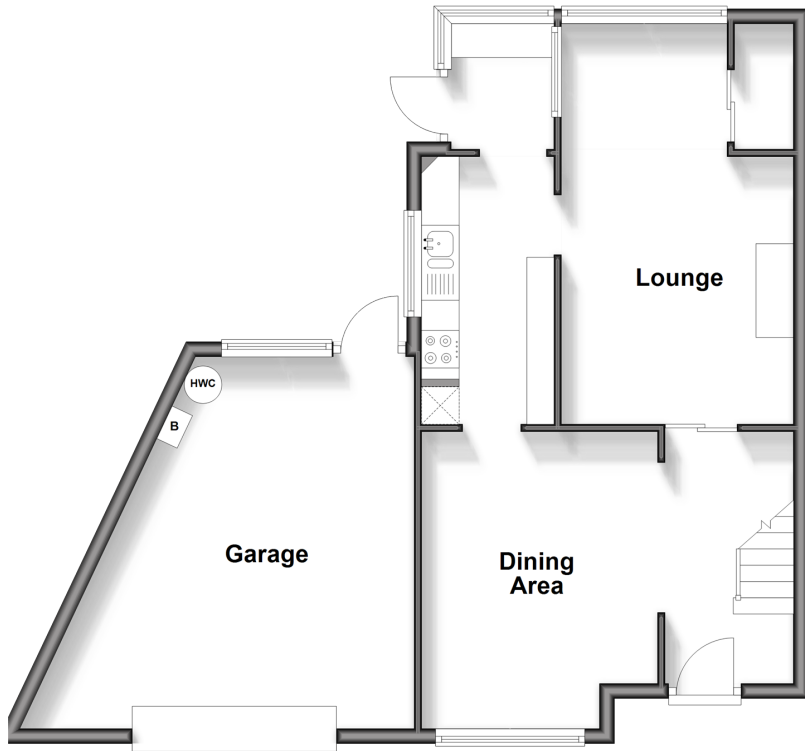
OVER 60?

Secure this property
for up to **59% less!**

Wards
Helping you move forwards

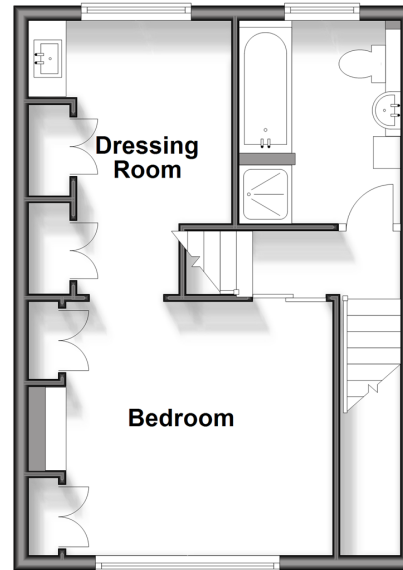
Ground Floor

Approx. 65.0 sq. metres (699.3 sq. feet)



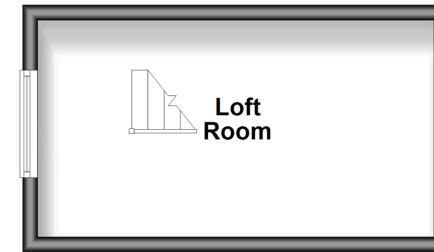
First Floor

Approx. 35.3 sq. metres (379.8 sq. feet)



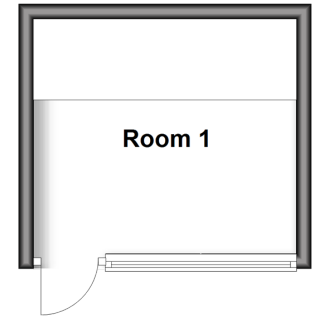
Second Floor

Approx. 15.3 sq. metres (164.4 sq. feet)



Outbuilding

Approx. 11.0 sq. metres (118.0 sq. feet)



Accommodation

GROUND FLOOR

Entrance Hall: 11'0 x 5'1 (3.36m x 1.55m)
Lounge: 17'9 x 9'11 (5.41m x 3.02m)
Dining Area: 10'1 x 10'0 (3.08m x 3.05m)
Kitchen: 11'1 x 5'1 (3.38m x 1.55m)
Utility Room: 5'0 x 4'1 (1.53m x 1.25m)
Garage

FIRST FLOOR

Landing
Bedroom: 12'0 x 11'0 (3.66m x 3.36m)
Dressing Room: 12'0 x 8'1 (3.66m x 2.47m)
Bathroom: 9'0 x 7'0 (2.75m x 2.14m)

SECOND FLOOR

Loft Room

OUTBUILDING

Room 1

OUTSIDE

Off Road Parking
Rear Garden



Main features

- Chain free with large garage and additional workshop
- Loft room
- Two reception rooms
- Low maintenance rear garden
- Immaculately presented throughout



Nearest Schools

Primary Schools: All Souls' C of E Primary 0.2 miles, Cheriton Primary 0.3 miles, Harcourt Primary 0.4 miles

Secondary Schools: The Harvey Grammar School 0.7 miles, The Folkestone School for Girls 0.8 miles



Transport Information

Train Stations: Folkestone West High Speed Link 0.5 miles, Folkestone Central 1.2 miles, Sandling 3.2 miles



Address

Risborough Lane, Folkestone, Kent, CT20



Directions

For directions to this property please contact us.



Wards
Helping you move forwards

Call Folkestone Branch 01303 256505 ■ wardsofkent.co.uk



■ Legal advice should be taken to verify fixtures/fittings, planning, alterations and/or lease details ■ Appliances & services are untested, dimensions are approximate and floor plans are not to scale
■ Through a Homewise Home For Life Plan people aged 60+ can secure this property for up to 59% less, by purchasing a Lifetime Lease.



12638220/20250329/LS/CC