



**OVER 60?**

Secure this property  
for up to **59% less!**

**Price**

**£500,000**

**Freehold**

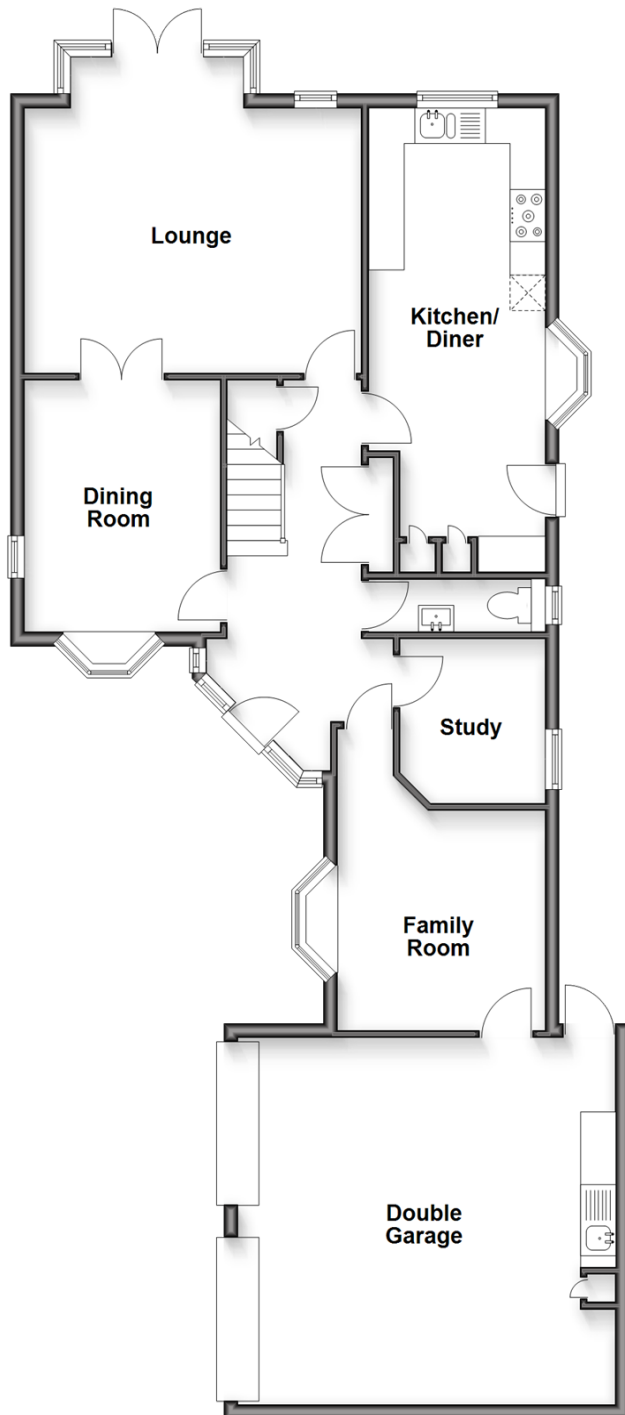
4x  3x  4x 

**Uphill, Hawkinge,  
Folkestone, Kent, CT18**

*Wards*  
Helping you move forwards

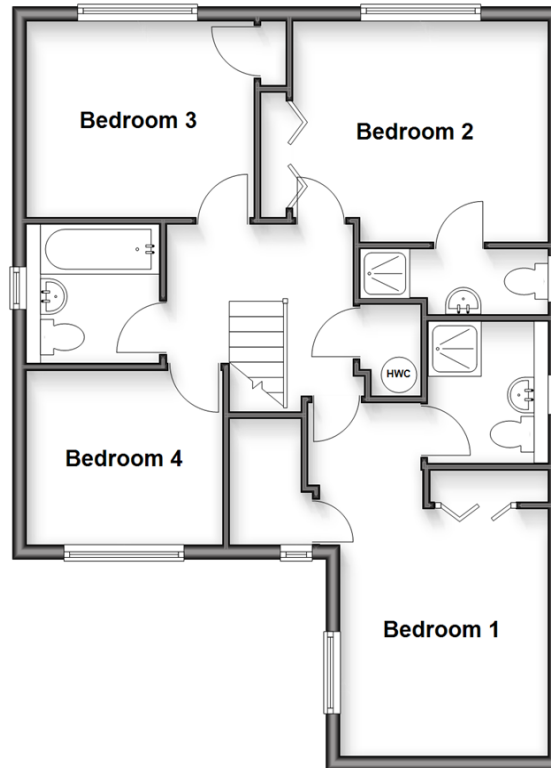
## Ground Floor

Approx. 103.6 sq. metres (1114.8 sq. feet)



## First Floor

Approx. 63.0 sq. metres (677.6 sq. feet)



## Accommodation

### GROUND FLOOR

Hallway

Dining Room: 11'8 x 9'1 (3.56m x 2.77m)

Lounge: 15'8 x 12'2 (4.78m x 3.71m)

Kitchen/Diner: 16'1 x 8'3 (4.91m x 2.52m)

Cloakroom

Study: 7'8 x 6'9 (2.34m x 2.06m)

Family Room: 10'0 x 9'9 (3.05m x 2.97m)

Double Garage: 16'9 x 16'6 (5.11m x 5.03m)

### FIRST FLOOR

Landing

Bedroom 1: 24'1 x 9'8 (7.35m x 2.95m)

En-Suite Shower Room

Bedroom 2: 11'10 x 10'1 (3.61m x 3.08m)

En-Suite Shower Room

Bedroom 3: 10'3 x 9'0 (3.13m x 2.75m)

Bedroom 4: 9'4 x 8'6 (2.85m x 2.59m)

Bathroom

### OUTSIDE

Front Garden

Rear Garden

Off Road Parking





## Main features

- Double garage and off road parking
- Private rear garden
- Four reception rooms
- Two en-suites
- Walk-in wardrobe and en-suite shower room to main bedroom



### Nearest Schools

Primary Schools: The Churchill School 0.2 miles, Hawkinge Primary 0.2 miles, Park Farm Primary 1.6 miles  
Secondary Schools: Highview School 1.6 miles, The Harvey Grammar School 1.8 miles, Oakwood School 1.9 miles



### Transport Information

Train Stations: Folkestone West High Speed Link 2.0 miles, Folkestone Central 2.0 miles, Sandling 4.6 miles



### Address

Uphill, Hawkinge, Folkestone, Kent, CT18



### Directions

For directions to this property please contact us.





Call Folkestone Branch 01303 256505 ■ [wardsofkent.co.uk](http://wardsofkent.co.uk)



- Legal advice should be taken to verify fixtures/fittings, planning, alterations and/or lease details
- Appliances & services are untested, dimensions are approximate and floor plans are not to scale
- Through a Homewise Home For Life Plan people aged 60+ can secure this property for up to 59% less, by purchasing a Lifetime Lease.



12623314/20250301/LS/LS1