



Price

£670,000

Freehold

6x  3x  2x 

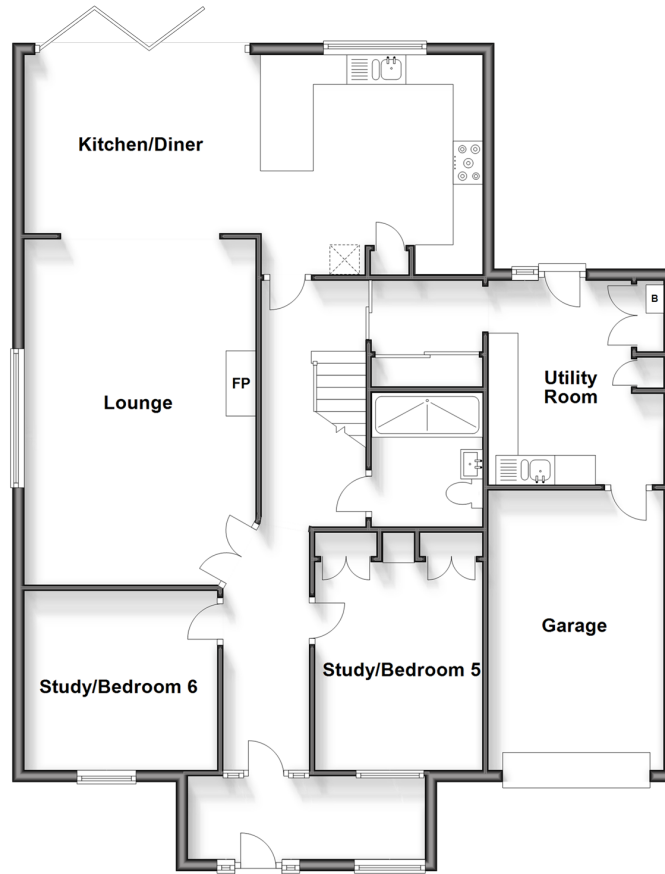
**Cauldham Lane,
Capel-Le-Ferne,
Capel-Le-Ferne,
Folkestone, Kent, CT18**

OVER 60?

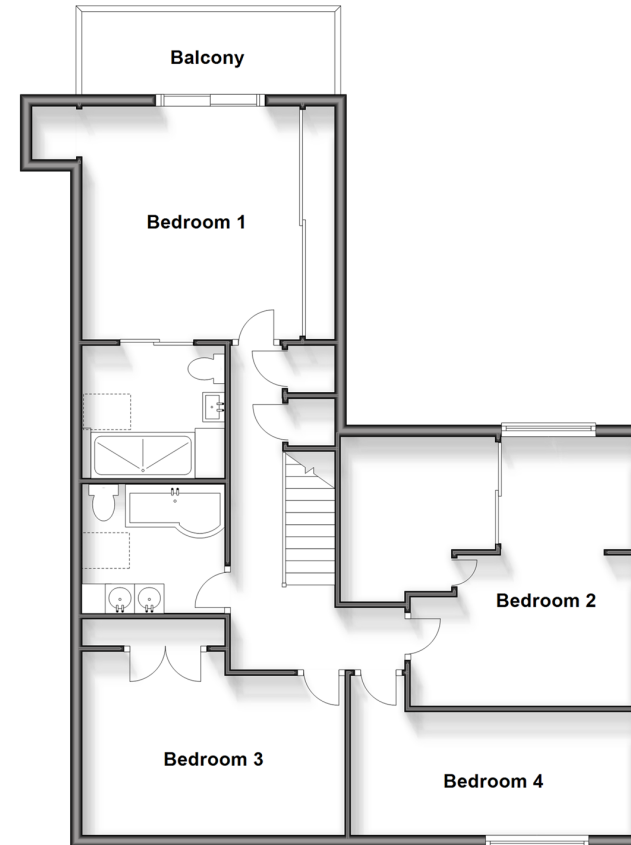
Secure this property
for up to **59% less!**

Wards
Helping you move forwards

Ground Floor
Approx. 125.6 sq. metres (1352.3 sq. feet)



First Floor
Approx. 87.7 sq. metres (944.4 sq. feet)



Accommodation

GROUND FLOOR

- Porch
- Hallway
- Lounge: 19'3 x 12'1 (5.87m x 3.69m)
- Kitchen/Diner: 25'6 x 12'2 (7.78m x 3.71m)
- Study/Bedroom 5: 13'0 x 8'1 (3.97m x 2.47m)
- Study/Bedroom 6: 10'1 x 9'1 (3.08m x 2.77m)
- Utility Room: 11'4 x 9'9 (3.46m x 2.97m)
- Shower Room: 7'2 x 5'5 (2.19m x 1.65m)
- Garage: 15'5 x 10'3 (4.70m x 3.13m)

FIRST FLOOR

- Landing
- Bedroom 1: 13'9 x 13'0 (4.19m x 3.97m)
- En-suite: 7'8 x 7'4 (2.34m x 2.24m)
- Balcony
- Bedroom 2: 15'0 x 12'5 (4.58m x 3.79m)
- Bedroom 3: 14'7 x 10'2 (4.45m x 3.10m)
- Bedroom 4: 15'9 x 9'2 (4.80m x 2.80m)
- Bathroom: 7'2 x 7'1 (2.19m x 2.16m)

OUTSIDE

- Off Road Parking
- Rear Garden



Main features

- **Open plan living accommodation - Immaculately presented throughout**
- **Large rear garden**
- **Rural location**
- **En-suite and balcony**
- **Driveway for multiple cars with EV charging point and integrated garage**



Nearest Schools

Primary Schools: Capel-le-Ferne Primary 0.5 miles, Castle Hill Community Primary 1.7 miles, Mundella Primary 2.0 miles

Secondary Schools: The Old School 0.8 miles, Oakwood



Transport Information

Train Stations: Folkestone Central 2.8 miles, Folkestone West High Speed Link 3.5 miles, Dover Priory 5.0 miles



Address

Cauldham Lane, Capel-Le-Ferne, Capel-Le-Ferne, Folkestone, Kent, CT18



Directions

For directions to this property please contact us.



Wards
Helping you move forwards

Call Folkestone Branch 01303 256505 ■ wardsof Kent.co.uk



■ Legal advice should be taken to verify fixtures/fittings, planning, alterations and/or lease details ■ Appliances & services are untested, dimensions are approximate and floor plans are not to scale
■ Through a Homewise Home For Life Plan people aged 60+ can secure this property for up to 59% less, by purchasing a Lifetime Lease.

EPC RATING: CURRENT: **C(73)** POTENTIAL: **A(93)**
12638115/20241005/CC/CC