



Price
£300,000

Freehold

3x  1x  1x 

**Woodfield Close,
Folkestone, Kent, CT19**

Wards
Helping you move forwards



Main features

- Large rear garden
- Corner plot - Cul-de-sac location
- Modern kitchen and bathroom
- Immaculately presented throughout
- Off road parking for multiple vehicles

Accommodation

GROUND FLOOR

- Hallway
- Lounge: 15'1 x 14'6 (4.60m x 4.42m)
- Kitchen: 15'1 x 9'9 (4.60m x 2.97m)
- Conservatory: 12'2 x 10'1 (3.71m x 3.08m)

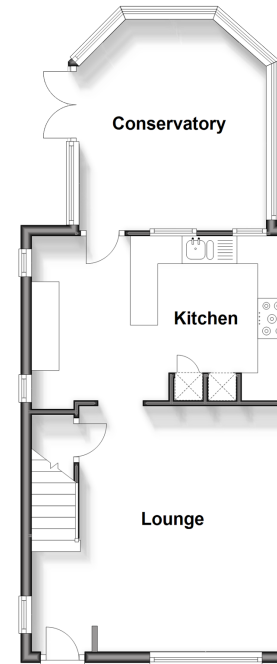
FIRST FLOOR

- Landing
- Bedroom 1: 11'7 x 9'1 (3.53m x 2.77m)
- Bedroom 2: 13'0 x 7'1 (3.97m x 2.16m)
- Bedroom 3: 7'0 x 5'8 (2.14m x 1.73m)
- Bathroom: 6'7 x 6'1 (2.01m x 1.86m)

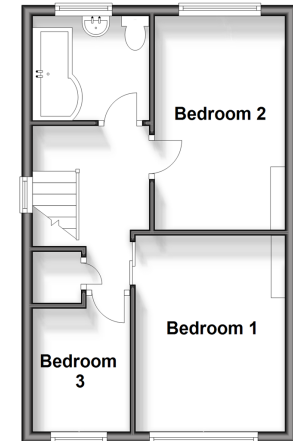
OUTSIDE

- Rear Garden
- Driveway

Ground Floor
Approx. 47.3 sq. metres (508.7 sq. feet)



First Floor
Approx. 34.7 sq. metres (373.3 sq. feet)



Call Folkestone - 01303 256505 ■ wardsfolkent.co.uk

- Legal advice should be taken to verify fixtures/fittings, planning, alterations and/or lease details
- Appliances & services are untested, dimensions are approximate and floor plans are not to scale



12637725/20240514/ET/CC