



Price
£325,000

Freehold

3x  1x  1x 

**Bolton Road,
Folkestone, Kent, CT19**

OVER 60?

Secure this property
for up to **59% less!**

Wards
Helping you move forwards



Main features

- Large three bedroom mid terrace
- Beautifully renovated throughout
- Extended to the rear
- Being sold with no onward chain
- Landscaped rear garden

Accommodation

GROUND FLOOR

Hallway

Lounge: 12'1 x 12'1 (3.69m x 3.69m)

Kitchen/Diner: 19'8 (6.00m) x 17'3 (5.26m)
narrowing to 9'1 (2.77m)

FIRST FLOOR

Landing

Bedroom 1: 14'0 x 11'4 (4.27m x 3.46m)

Bedroom 2: 11'4 x 9'7 (3.46m x 2.92m)

Bedroom 3: 10'7 x 5'9 (3.23m x 1.75m)

Bathroom

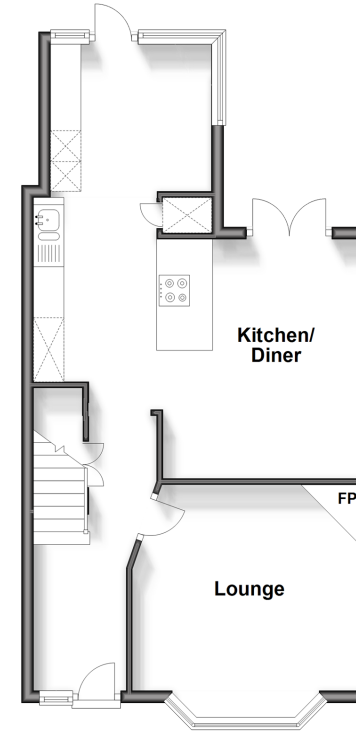
OUTSIDE

Front Garden

Rear Garden

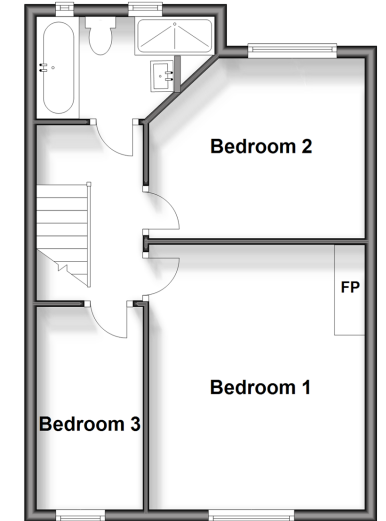
Ground Floor

Approx. 48.2 sq. metres (518.8 sq. feet)



First Floor

Approx. 41.3 sq. metres (444.5 sq. feet)



Call Folkestone - 01303 256505 ■ wardsfolkent.co.uk

- Legal advice should be taken to verify fixtures/fittings, planning, alterations and/or lease details
- Appliances & services are untested, dimensions are approximate and floor plans are not to scale
- Through a Homewise Home For Life Plan people aged 60+ can secure this property for up to 59% less, by purchasing a Lifetime Lease.



12638061/20240827/LS/LS1