



OVER 60?

Secure this property
for up to **59% less!**

Price
£240,000

Freehold

2x  1x  2x 

**Southbourne Road,
Folkestone, Kent, CT19**

Wards
Helping you move forwards



Main features

- Investment property, tenant in situ
- Close to Harbour Arm and Sunny Sands
- Two reception rooms
- Low maintenance rear garden
- Spacious throughout

Accommodation

GROUND FLOOR

Hallway
 Lounge: 11'5 x 10'4 (3.48m x 3.15m)
 Dining Area: 13'1 x 11'0 (3.99m x 3.36m)
 Kitchen: 11'2 x 6'9 (3.41m x 2.06m)

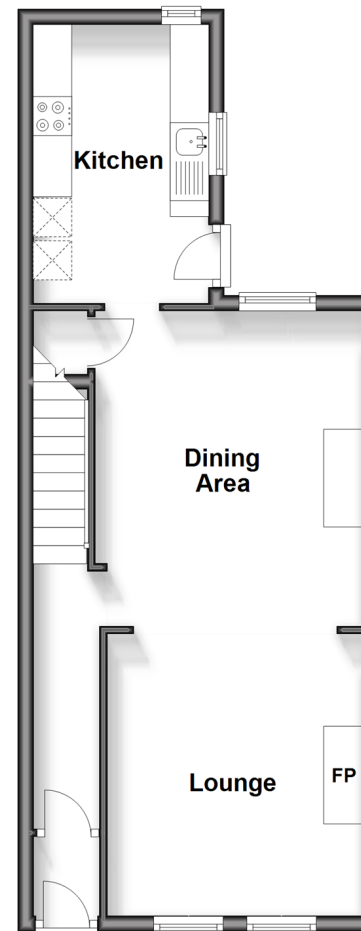
SPLIT LEVEL FIRST FLOOR

Landing
 Bedroom 2: 13'1 x 7'8 (3.99m x 2.34m)
 Bedroom 1: 13'2 x 11'1 (4.02m x 3.38m)
 Bathroom

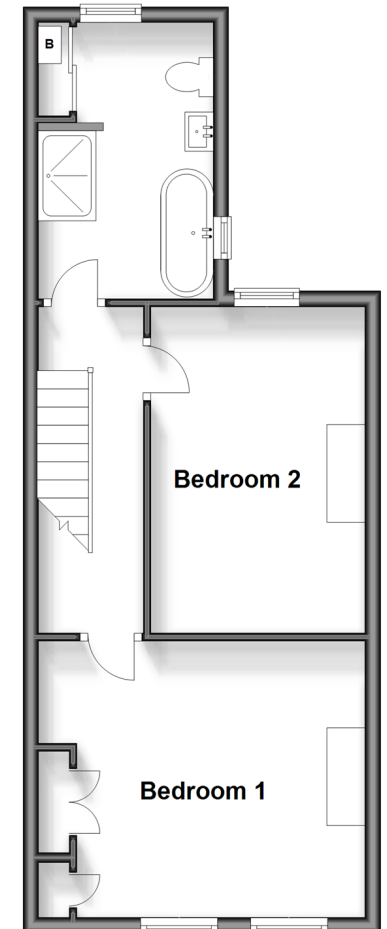
OUTSIDE

Front Garden
 Rear Garden

Ground Floor
 Approx. 41.3 sq. metres (445.0 sq. feet)



Split Level First Floor
 Approx. 41.5 sq. metres (446.6 sq. feet)



Call Folkestone - 01303 256505 ■ wardsfolkent.co.uk

- Legal advice should be taken to verify fixtures/fittings, planning, alterations and/or lease details
- Appliances & services are untested, dimensions are approximate and floor plans are not to scale
- Through a Homewise Home For Life Plan people aged 60+ can secure this property for up to 59% less, by purchasing a Lifetime Lease.



12634333/20241019/LS/LS1