



Price

£600,000

Freehold

4x  3x  3x 

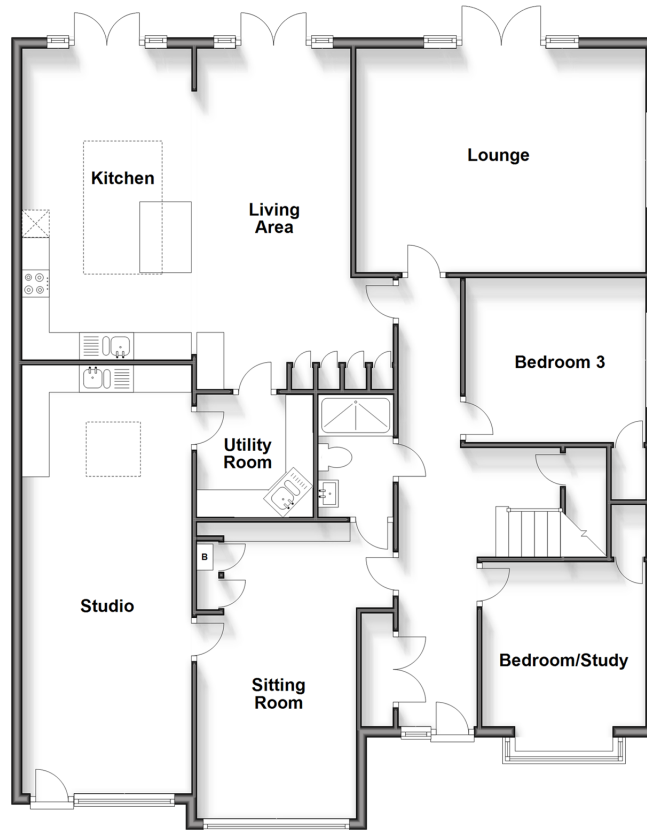
**Canterbury Road,
Densole, Folkestone,
Kent, CT18**

OVER 60?

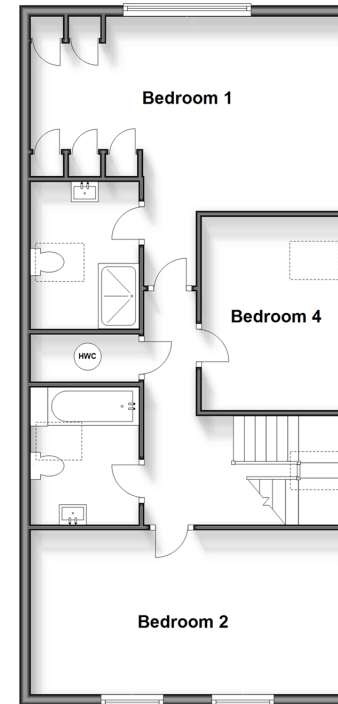
Secure this property
for up to **59% less!**

Wards
Helping you move forwards

Ground Floor
Approx. 151.6 sq. metres (1632.2 sq. feet)



First Floor
Approx. 72.2 sq. metres (777.4 sq. feet)



Accommodation

GROUND FLOOR

Entrance Hall
Lounge: 17'6 x 13'6 (5.34m x 4.12m)
Living Area: 20'0 x 13'8 (6.10m x 4.17m)
Kitchen: 17'7 x 10'0 (5.36m x 3.05m)
Sitting Room
Studio
Bedroom/Study
Bedroom 3: 10'1 x 9'1 (3.08m x 2.77m)
Utility Room
Downstairs Shower Room

FIRST FLOOR

Landing
Bedroom 1: 18'1 x 16'1 (5.52m x 4.91m)
En-suite
Bedroom 2: 18'1 x 10'1 (5.52m x 3.08m)
Bedroom 4: 11'8 x 8'4 (3.56m x 2.54m)
Bathroom

OUTSIDE

Garage
Off Road Parking
Rear Garden



Main features

- Open plan living accommodation with en-suite and utility room
- Self contained annex potential
- Large rear garden
- Off road parking for multiple vehicles
- Spacious and immaculately presented throughout



Nearest Schools

Primary Schools: Hawkinge Primary 1.3 miles, The Churchill School 1.7 miles

Secondary Schools: Oakwood School 4.0 miles, Highview School 4.4 miles, The Harvey Grammar School 4.5 miles



Transport Information

Train Stations: Folkestone Central 4.5 miles, Folkestone West High Speed Link 4.7 miles, Dover Priory 6.3 miles



Address

Canterbury Road, Densole, Folkestone, Kent, CT18



Directions

For directions to this property please contact us.





Call Folkestone Branch 01303 256505 ■ wardsofkent.co.uk



- Legal advice should be taken to verify fixtures/fittings, planning, alterations and/or lease details
- Appliances & services are untested, dimensions are approximate and floor plans are not to scale
- Through a Homewise Home For Life Plan people aged 60+ can secure this property for up to 59% less, by purchasing a Lifetime Lease.



12637022/20250205/LS/CC