



OVER 60?

Secure this property
for up to **59% less!**

Price
£375,000

Leasehold

2x  1x  1x 

**10 Grimston Gardens,
Folkestone, Kent, CT20**

Wards
Helping you move forwards



Main features

- Private rear garden
- Cellar
- Spacious rooms and original features
- Immaculately presented throughout
- Situated in a very sought after location within walking distance of town and the train station

Accommodation

GROUND FLOOR

Entrance Hall

Lounge: 19'4 x 13'9 (5.90m x 4.19m)

Garden Room

Kitchen: 12'6 x 8'5 (3.81m x 2.57m)

Bathroom: 11'11 x 5'9 (3.63m x 1.75m)

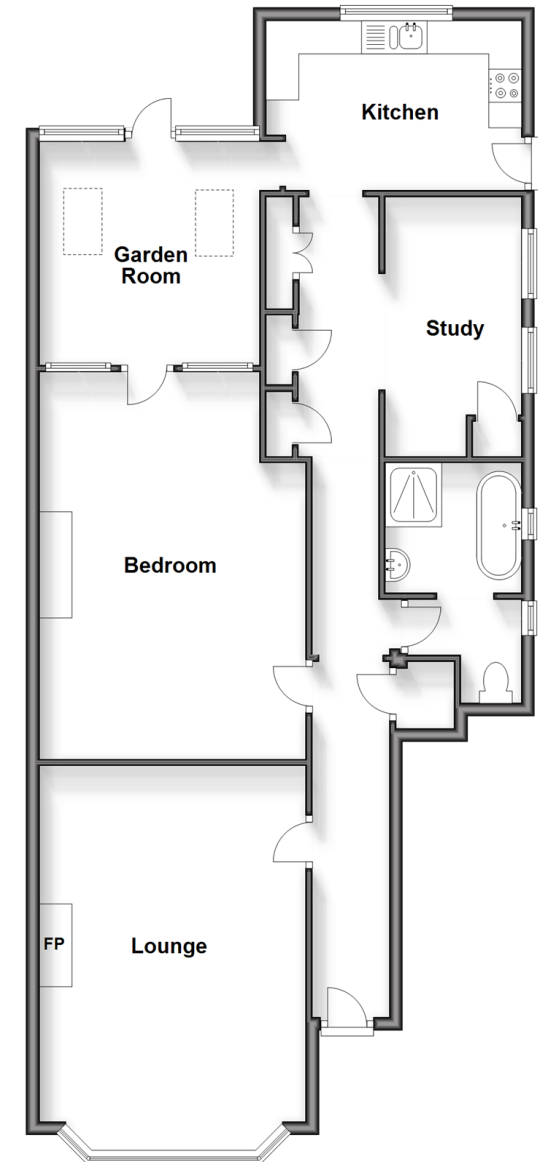
Bedroom 1: 20'1 x 13'9 (6.13m x 4.19m)

Study: 12'5 x 7'1 (3.79m x 2.16m)

OUTSIDE

Rear Garden

Ground Floor
Approx. 102.4 sq. metres (1101.8 sq. feet)



Call Folkestone - 01303 256505 ■ wardsfolkent.co.uk

- Legal advice should be taken to verify fixtures/fittings, planning, alterations and/or lease details
- Appliances & services are untested, dimensions are approximate and floor plans are not to scale
- Through a Homewise Home For Life Plan people aged 60+ can secure this property for up to 59% less, by purchasing a Lifetime Lease.



12637912/20240426/LS/CC