



Price
£500,000

Freehold

5x  2x  2x 

**Dover Road, Folkestone,
Kent, CT19**

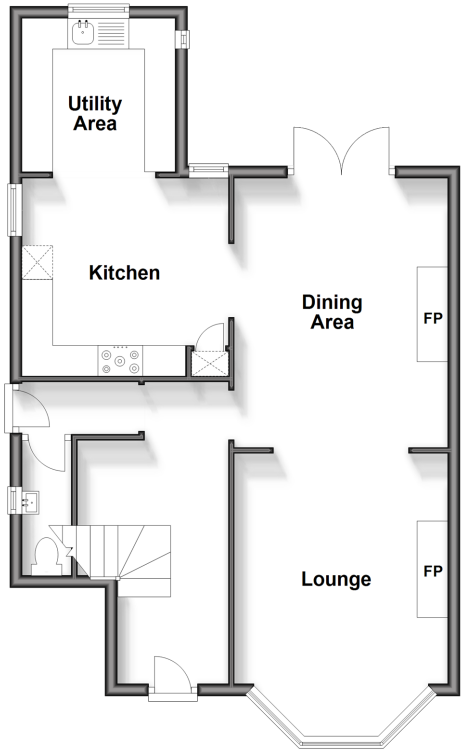
OVER 60?

Secure this property
for up to **59% less!**

Wards
Helping you move forwards

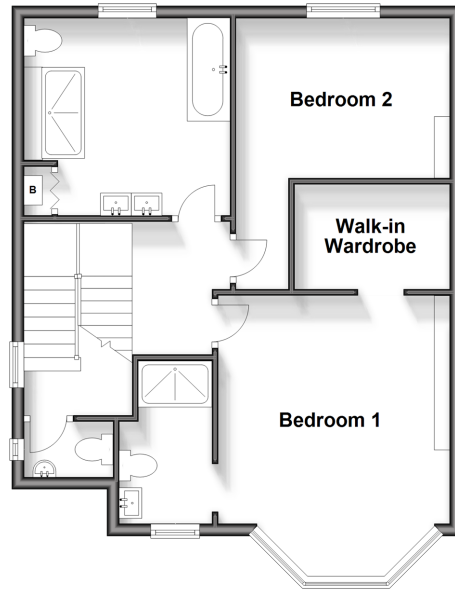
Ground Floor

Approx. 61.5 sq. metres (662.4 sq. feet)



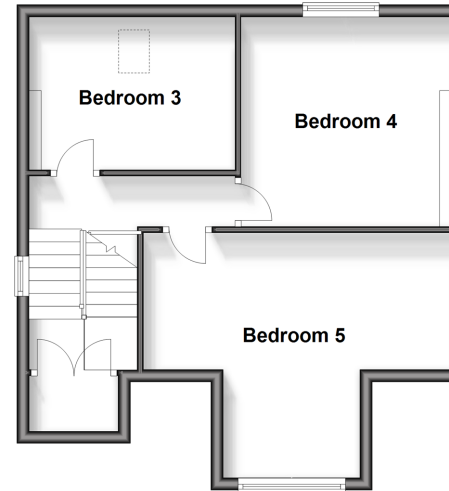
First Floor

Approx. 56.6 sq. metres (609.4 sq. feet)



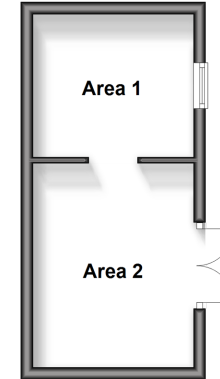
Second Floor

Approx. 45.4 sq. metres (488.7 sq. feet)



Outbuilding

Approx. 14.9 sq. metres (160.7 sq. feet)



Accommodation

GROUND FLOOR

Entrance Hall
Hallway
Lounge: 11'5 x 5'0 (3.48m x 1.53m)
Dining Area: 14'1 x 11'5 (4.30m x 3.48m)
Kitchen: 12'3 x 6'7 (3.74m x 2.01m)
Utility Area: 10'5 x 10'3 (3.18m x 3.13m)
Downstairs Toilet: 6'1 x 3'7 (1.86m x 1.09m)

FIRST FLOOR

Landing
Bedroom 1: 15'2 x 11'5 (4.63m x 3.48m)
En-suite: 9'9 x 6'8 (2.97m x 2.03m)
Walk-in Wardrobe
Bedroom 2: 13'1 x 12'6 (3.99m x 3.81m)
Bathroom: 11'2 x 8'4 (3.41m x 2.54m)
Separate Toilet: 6'0 x 5'1 (1.83m x 1.55m)

SECOND FLOOR

Landing
Bedroom 3: 11'3 x 8'6 (3.43m x 2.59m)
Bedroom 4: 12'8 x 12'5 (3.86m x 3.79m)
Bedroom 5: 15'7 x 10'8 (4.75m x 3.25m)

OUTBUILDING

Area 1
Area 2

OUTSIDE

Rear Garden
Off Road Parking



Main features

- Large rear garden with separate garden room, ideal for use as a home office
- Walk-in wardrobe/en-suite to master bedroom
- Off road parking for three cars
- Walking distance to beach and town
- Spacious open plan lounge/diner with log burner
- Well presented throughout and packed full of charming original features



Nearest Schools

Primary Schools: Castle Hill Community Primary 0.3 miles, Folkestone, St Mary's C of E Primary 0.5 miles, Mundella Primary 0.6 miles

Secondary Schools: Oakwood School 0.1 miles, Highview



Transport Information

Train Stations: Folkestone Central 1.4 miles, Folkestone West High Speed Link 2.7 miles, Dover Priory 5.6 miles



Address

Dover Road, Folkestone, Kent, CT19



Directions

For directions to this property please contact us.



Wards
Helping you move forwards

Call Folkestone Branch 01303 256505 ■ wardsof Kent.co.uk



- Legal advice should be taken to verify fixtures/fittings, planning, alterations and/or lease details
- Appliances & services are untested, dimensions are approximate and floor plans are not to scale
- Through a Homewise Home For Life Plan people aged 60+ can secure this property for up to 59% less, by purchasing a Lifetime Lease.



12637919/20240625/OJ/CC