



Price
£525,000

Freehold

3x  1x  2x 

**Hasborough Road,
Folkestone, Kent, CT19**

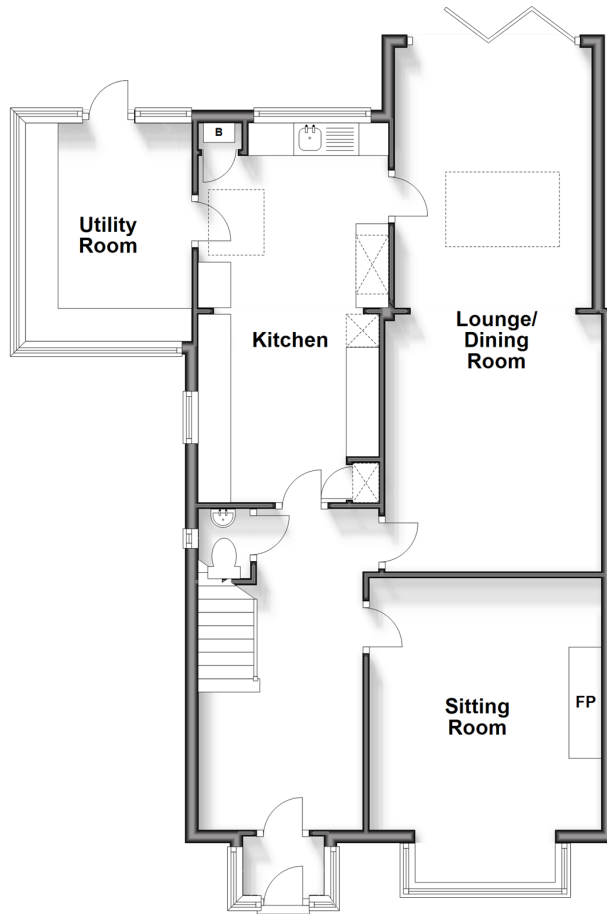
OVER 60?

Secure this property
for up to **59% less!**

Wards
Helping you move forwards

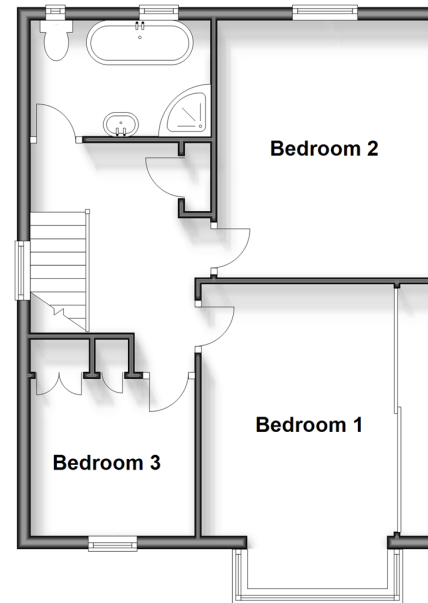
Ground Floor

Approx. 81.0 sq. metres (871.5 sq. feet)



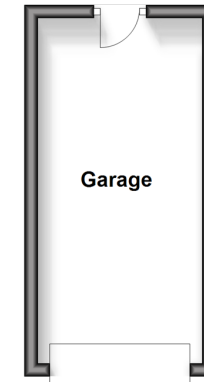
First Floor

Approx. 49.7 sq. metres (535.0 sq. feet)



Outbuilding

Approx. 13.4 sq. metres (143.8 sq. feet)



Accommodation

GROUND FLOOR

- Porch
- Hallway
- Lounge/Dining room: 27'1 x 9'6 (8.26m x 2.90m)
- Kitchen: 19'5 x 8'9 (5.92m x 2.67m)
- Sitting Room: 12'5 x 11'5 (3.79m x 3.48m)
- Utility Room: 10'9 x 8'2 (3.28m x 2.49m)

FIRST FLOOR

- Landing
- Bedroom 1: 15'3 x 9'1 (4.65m x 2.77m)
- Bedroom 2: 12'6 x 10'1 (3.81m x 3.08m)
- Bedroom 3: 7'9 x 7'5 (2.36m x 2.26m)
- Bathroom

OUTBUILDING

- Garage

OUTSIDE

- Driveway
- Front Garden
- Rear Garden



Main features

- Immaculately presented, packed full of charming original features
- Snug plus planning permission granted for 2 storey extension on the side
- Recently built garden room, for home office/gym
- Detached garage and ORP for 2 cars plus electric car charging point
- Sought after location, close to beach and primary schools



Nearest Schools

Primary Schools: Folkestone, St Mary's C of E Primary 0.0 miles, Folkestone, St Peter's C of E Primary 0.4 miles

Secondary Schools: Oakwood School 0.3 miles, Highview School 0.9 miles, The Harvey Grammar School 1.6 miles



Transport Information

Train Stations: Folkestone Central 1.1 miles, Folkestone West High Speed Link 1.8 miles, Dover Priory 5.5 miles



Address

Hasborough Road, Folkestone, Kent, CT19



Directions

For directions to this property please contact us.



Wards
Helping you move forwards

Call Folkestone Branch 01303 256505 ■ wardsof Kent.co.uk



- Legal advice should be taken to verify fixtures/fittings, planning, alterations and/or lease details
- Appliances & services are untested, dimensions are approximate and floor plans are not to scale
- Through a Homewise Home For Life Plan people aged 60+ can secure this property for up to 59% less, by purchasing a Lifetime Lease.

EPC RATING

CURRENT: D(62) POTENTIAL: C(76)

12629894/20240308/LS/CC