



Price
£300,000

Freehold

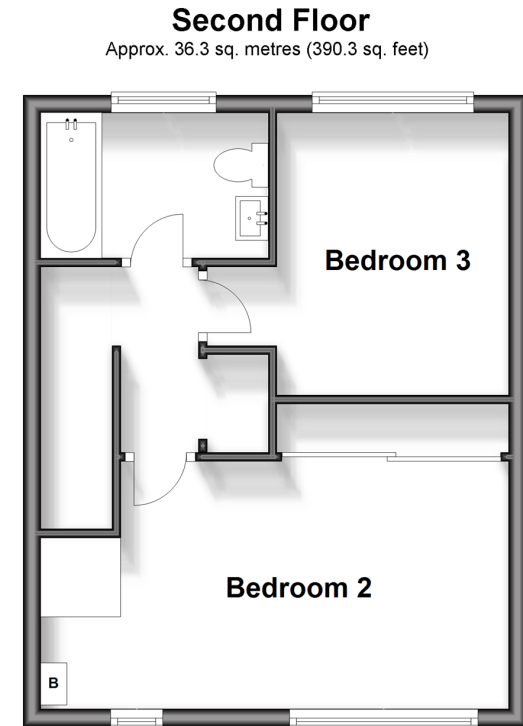
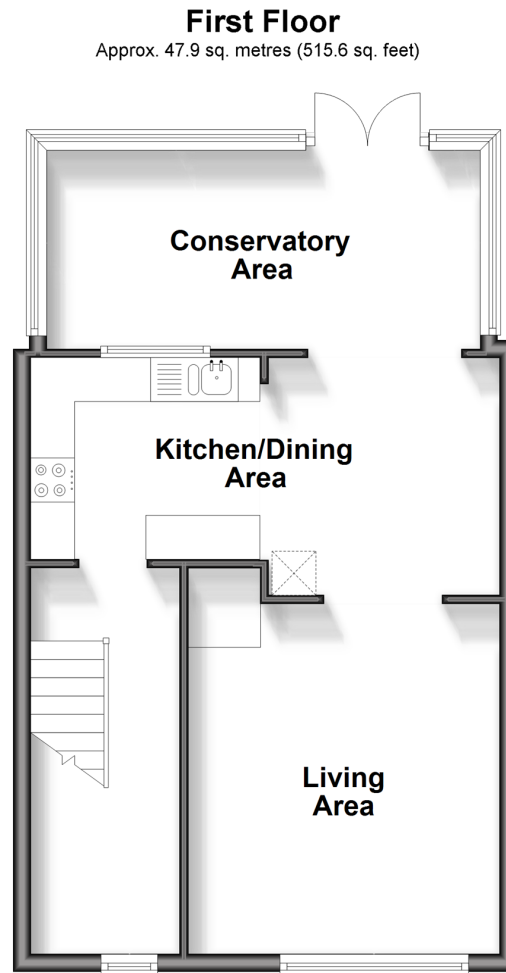
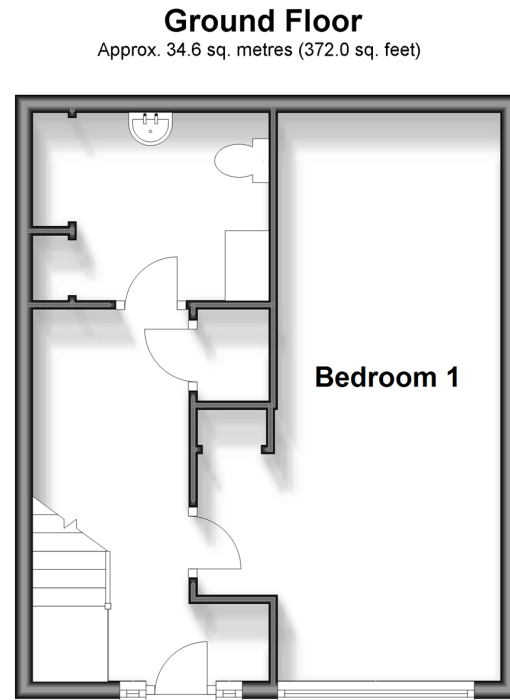
3x  1x  1x 

**Chalcroft Road, Golden
Valley, Folkestone,
Kent, CT20**

OVER 60?

Secure this property
for up to **59% less!**

Wards
Helping you move forwards



Accommodation

GROUND FLOOR

Hallway

Bedroom 1: 21'5 x 13'6 (6.53m x 4.12m)

Utility Room: 8'1 x 6'1 (2.47m x 1.86m)

FIRST FLOOR

Landing

Living Area: 13'1 x 11'6 (3.99m x 3.51m)

Kitchen/Dining Area: 18'1 x 8'1 (5.52m x 2.47m)

Conservatory Area: 16'5 x 7'1 (5.01m x 2.16m)

SECOND FLOOR

Landing

Bedroom 2: 18'1 x 8'1 (5.52m x 2.47m)

Bedroom 3: 10'1 x 8'5 (3.08m x 2.57m)

Bathroom: 9'5 x 5'7 (2.87m x 1.70m)

OUTSIDE

Driveway

Rear Garden



Main features

- Within the catchment area for Sandgate Primary School
- Versatile townhouse set over 3 floors in popular location
- No onward chain
- Spacious open plan living
- Off-road Parking



Nearest Schools

Primary Schools: Sandgate Primary 0.6 miles, All Souls' C of E Primary 0.9 miles, Lymgne C of E Primary 0.9 miles

Secondary Schools: The Folkestone School for Girls 0.9 miles, The Harvey Grammar School 0.9 miles, Oakwood



Transport Information

Train Stations: Folkestone West High Speed Link 0.7 miles, Folkestone Central 1.5 miles, Sandling 6.0 miles



Address

Chalcroft Road, Golden Valley, Folkestone, Kent, CT20



Directions

For directions to this property please contact us.



Wards
Helping you move forwards

Call Folkestone Branch 01303 256505 ■ wardsof Kent.co.uk



- Legal advice should be taken to verify fixtures/fittings, planning, alterations and/or lease details
- Appliances & services are untested, dimensions are approximate and floor plans are not to scale
- Through a Homewise Home For Life Plan people aged 60+ can secure this property for up to 59% less, by purchasing a Lifetime Lease.



EPC RATING
CURRENT: C(76) POTENTIAL: B(85)

12637723/20240625/LS1/LS1