



**Price**  
**£375,000**

**Freehold**

4x  1x  1x 

**The Meade, Hawkinge,  
Folkestone, Kent, CT18**

**OVER 60?**

Secure this property  
for up to **59% less!**



Virtual Reality Tour available

*Wards*

Helping you move forwards





## Main features

- Open plan kitchen/diner plus refurbished high end bathroom
- Bio ethanol fires
- Beautifully presented throughout, with a low maintenance garden
- Garage and off road parking
- Situated in a very quiet residential location

## Accommodation

### GROUND FLOOR

- Porch
- Hallway
- Lounge: 15'1 x 14'0 (4.60m x 4.27m)
- Kitchen/Diner: 17'1 x 8'1 (5.21m x 2.47m)
- Utility Room
- Cloakroom

### FIRST FLOOR

- Landing
- Bedroom 1: 10'1 x 10'1 (3.08m x 3.08m)
- Bedroom 2: 11'1 x 8'1 (3.38m x 2.47m)
- Bedroom 3: 18'3 x 5'4 (5.57m x 1.63m)
- Bedroom 4: 8'1 x 8'1 (2.47m x 2.47m)
- Bathroom

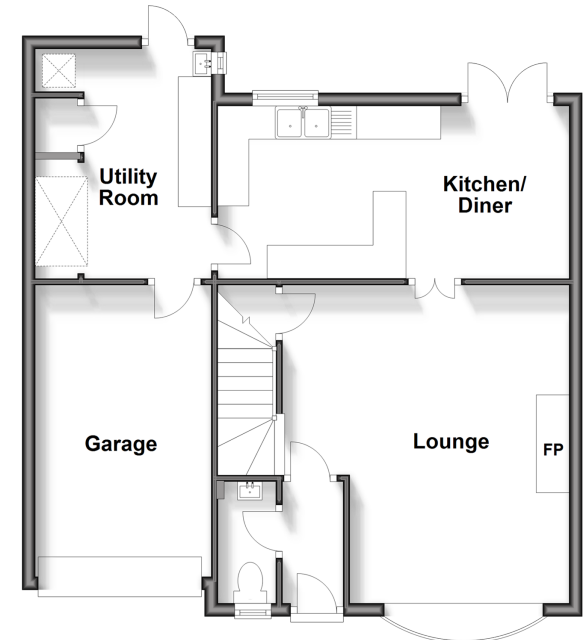
### OUTSIDE

- Garage
- Off Road Parking
- Front Garden
- Rear Garden

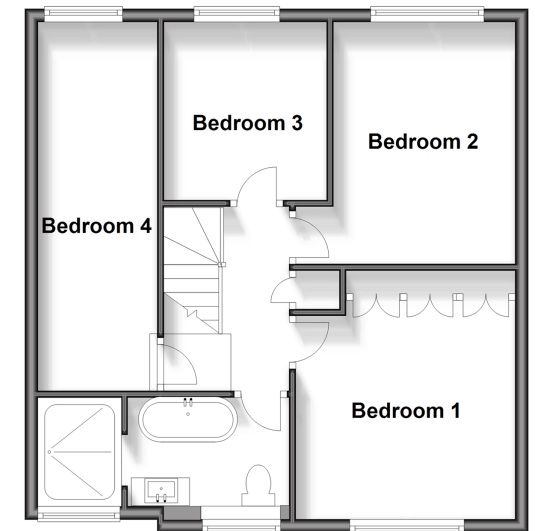
Call Folkestone - 01303 256505 ■ [wardsfolkent.co.uk](http://wardsfolkent.co.uk)

- Legal advice should be taken to verify fixtures/fittings, planning, alterations and/or lease details
- Appliances & services are untested, dimensions are approximate and floor plans are not to scale
- Through a Homewise Home For Life Plan people aged 60+ can secure this property for up to 59% less, by purchasing a Lifetime Lease.

**Ground Floor**  
Approx. 62.2 sq. metres (669.2 sq. feet)



**Split Level First Floor**  
Approx. 53.0 sq. metres (570.6 sq. feet)



12637784/20240210/LS/CC