



**Modern
Auction**

**£65,000
Leasehold**

2x  1x  1x 

**Harvey House, Harvey
Street, Folkestone, Kent,
CT20**

Wards
Helping you move forwards



Main features

- Within walking distance to Folkestone Station and amenities
- Ideal for first time buy or any buy to let investor
- For sale by Modern Auction - T&C's apply
- Subject to an undisclosed Reserve Price
- Buyer's fees apply

Accommodation

GROUND FLOOR

Kitchen/Lounge: 23'3 x 15'10 (7.09m x 4.83m)

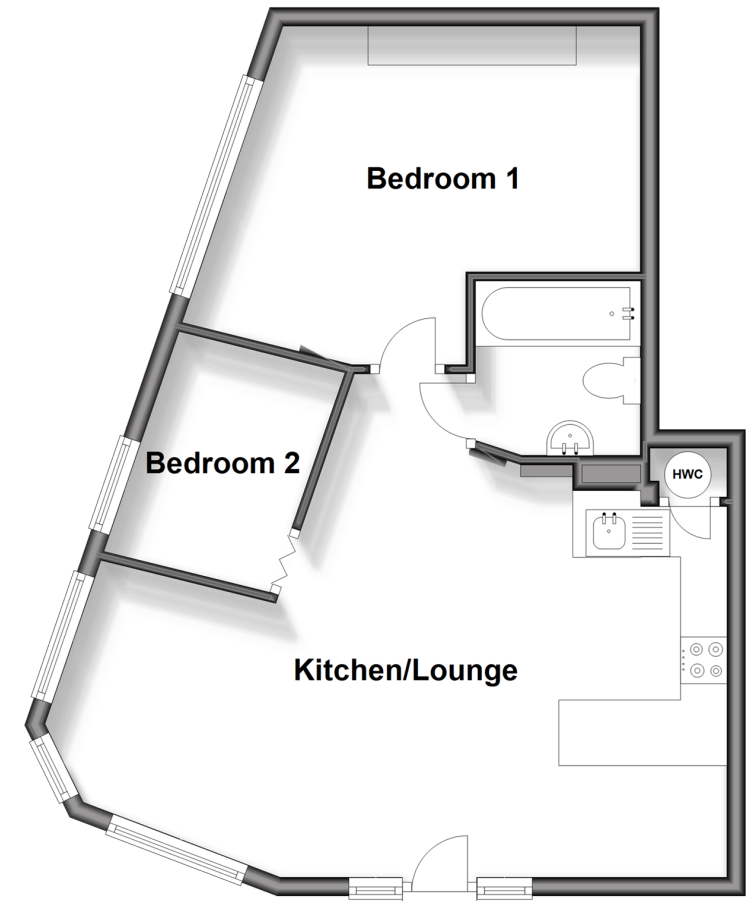
Bedroom 1: 13'8 x 10'5 (4.17m x 3.18m)

Bedroom 2: 8'7 x 4'11 (2.62m x 1.50m)

Bathroom: 6'0 x 5'10 (1.83m x 1.78m)

Ground Floor

Approx. 51.8 sq. metres (558.1 sq. feet)



Call Folkestone - 01303 256505 ■ wardsof Kent.co.uk

- If buying to let, the energy rating will need to be improved to at least 'E' rating before you can let the property
- Legal advice should be taken to verify fixtures/fittings, planning, alterations and/or lease details
- Appliances & services are untested, dimensions are approximate and floor plans are not to scale



12635566/20250205/LS/CW