



OVER 60?

Secure this property
for up to **59% less!**

Price

£220,000

Leasehold

2x  1x  1x 

**Gainsborough Court,
Grimston Gardens,
Folkestone, Kent, CT20**

Wards

Helping you move forwards



Main features

- No chain allowing for a speedy purchase
- Set in the West End of Folkestone
- Close to the town centre and beautiful Leas
- Lift access
- Allocated parking

Accommodation

FIRST FLOOR

Hallway

Lounge: 19'3 x 11'9 (5.87m x 3.58m)

Kitchen: 9'7 x 8'1 (2.92m x 2.47m)

Bedroom 1: 12'8 x 11'8 (3.86m x 3.56m)

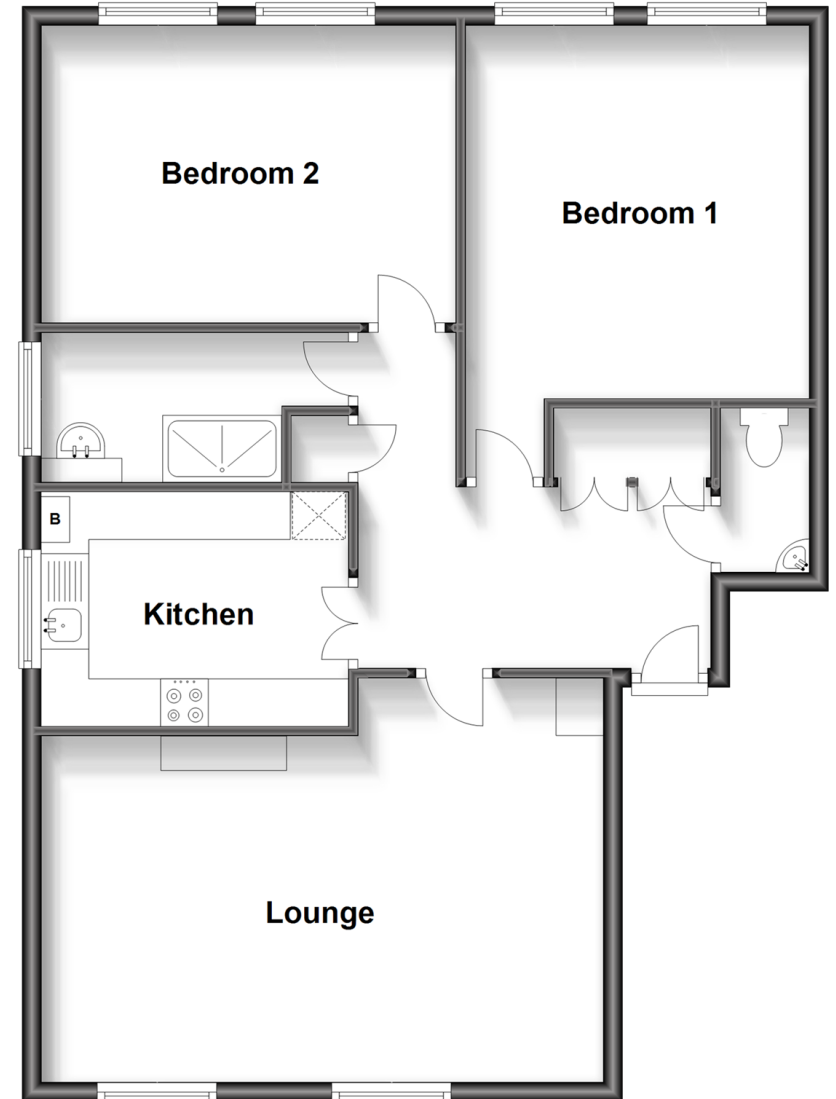
Bedroom 2: 14'3 x 10'2 (4.35m x 3.10m)

Shower Room

Separate Toilet

First Floor

Approx. 78.8 sq. metres (848.2 sq. feet)



Call Folkestone - 01303 256505 ■ wardsfolkent.co.uk

- Legal advice should be taken to verify fixtures/fittings, planning, alterations and/or lease details
- Appliances & services are untested, dimensions are approximate and floor plans are not to scale
- Through a Homewise Home For Life Plan people aged 60+ can secure this property for up to 59% less, by purchasing a Lifetime Lease.



12636950/20240806/ET/CW