



OVER 60?

Secure this property
for up to **59% less!**



Video Tour available

Price

£600,000

Leasehold

3x 2x 2x

**Testwood Court, Clifton
Gardens, Folkestone,
Kent, CT20**

Wards

Helping you move forwards



Main features

- Highly sought after West End location
- Two private patio areas
- What was once two flats, has now been beautifully combined to make one large ground floor apartment
- Luxury living accommodation
- In immaculate condition, ready to move straight into

Accommodation

GROUND FLOOR

Entrance Hallway

Bedroom 1 : 19'0 x 12'3 (5.80m x 3.74m)

En-Suite Bathroom

Bedroom 2 : 15'3 x 12'6 (4.65m x 3.81m)

En-Suite Shower Room

Cloakroom

Utility Room

Lounge: 22'1 x 15'0 (6.74m x 4.58m)

Dining Room : 13'5 x 10'0 (4.09m x 3.05m)

Kitchen : 17'8 x 13'1 (5.39m x 3.99m)

Bedroom 3

OUTSIDE

2 Private Patio Areas

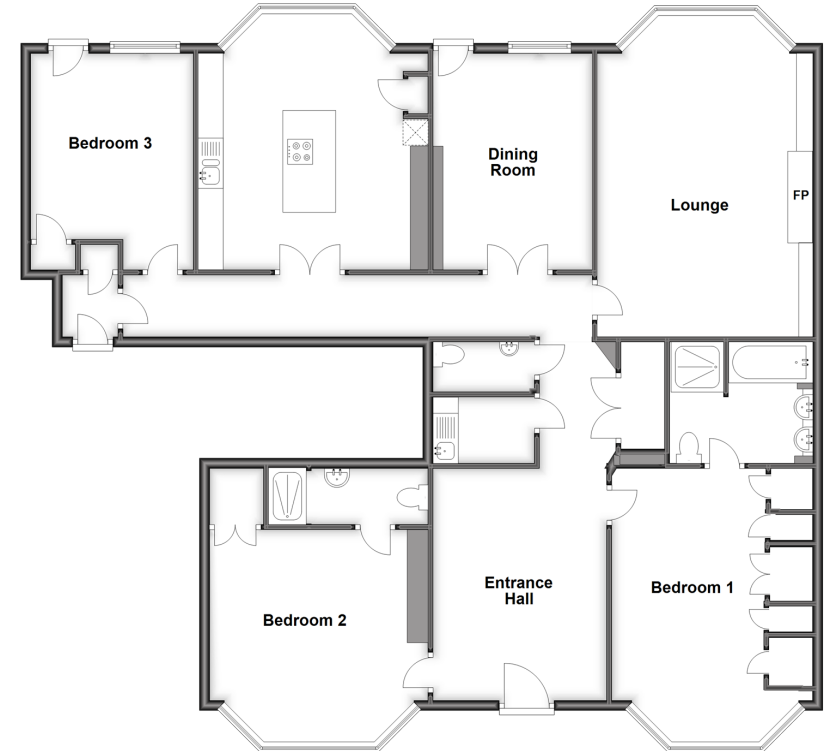
Garage

2 Allocated Parking Spaces

Call Folkestone - 01303 256505 ■ wardsfolkent.co.uk

- Legal advice should be taken to verify fixtures/fittings, planning, alterations and/or lease details
- Appliances & services are untested, dimensions are approximate and floor plans are not to scale
- Through a Homewise Home For Life Plan people aged 60+ can secure this property for up to 59% less, by purchasing a Lifetime Lease.

Ground Floor
Approx. 165.5 sq. metres (1781.7 sq. feet)



12636804/20231101/LS1/CW