



Guide Price
£300,000

Freehold

2x  1x  1x 

**St. Peter's Court,
Faversham, Kent, ME13**

OVER 60?

Secure this property
for up to **59% less!**

Wards
Helping you move forwards



Main features

- Recently renovated to a high standard
- Modern interior throughout with log burner
- Walking distance to the town centre and mainline station
- Useful conservatory
- Garden cabin with power and light

Accommodation

GROUND FLOOR

Entrance Porch

Entrance Hall

Lounge/Diner: 18'3 x 11'8 (5.57m x 3.56m)

Kitchen: 18'0 6 x 6'9 (5.49m x 2.06m)

Utility Room

Conservatory

FIRST FLOOR

Landing

Bedroom 1: 13'4 x 9'1 (4.07m x 2.77m)

Bedroom 2: 11'8 x 8'9 (3.56m x 2.67m)

Shower Room

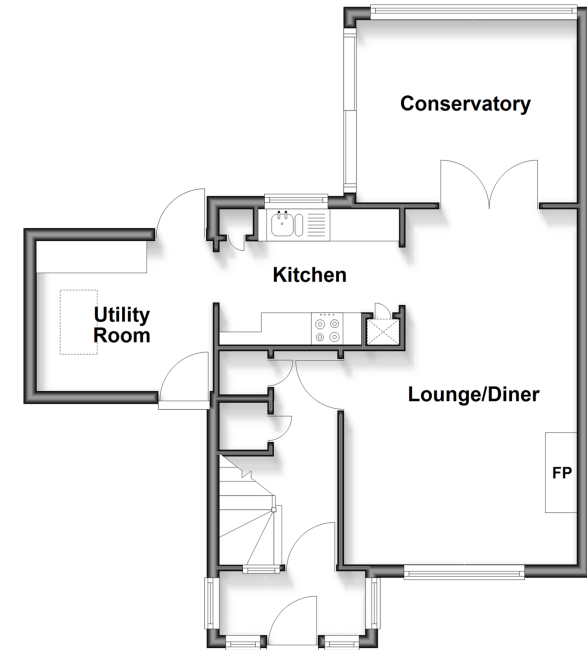
OUTSIDE

Front Garden

Rear Garden

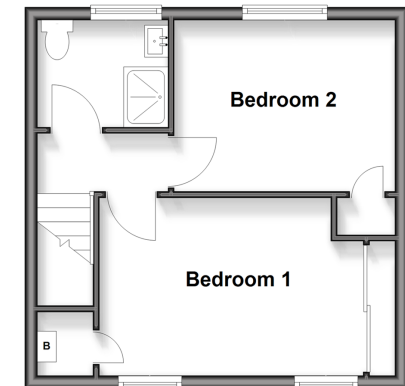
Ground Floor

Approx. 50.9 sq. metres (548.0 sq. feet)



First Floor

Approx. 31.3 sq. metres (337.2 sq. feet)



Call Faversham - 01795 535517 ■ wardsofkent.co.uk

- Legal advice should be taken to verify fixtures/fittings, planning, alterations and/or lease details
- Appliances & services are untested, dimensions are approximate and floor plans are not to scale
- Through a Homewise Home For Life Plan people aged 60+ can secure this property for up to 59% less, by purchasing a Lifetime Lease



10832569/20260121/JB/HR