



Guide Price
£220,000

Freehold

3x  1x  1x 

**Priory Place, Faversham,
Kent, ME13**

OVER 60?

Secure this property
for up to **59% less!**

Wards
Helping you move forwards



Main features

- Garage en bloc - a rare find
- Walking distance to town centre
- Ideal for first time buyers and investors
- Close to local primary school
- Countryside walks and Oare Creek on your doorstep

Accommodation

Lounge: 14'0 x 11'0 (4.27m x 3.36m)

Kitchen: 11'0 x 7'0 (3.36m x 2.14m)

Lean-To

Shower Room

FIRST FLOOR

Landing

Bedroom 1: 10'0 x 9'0 (3.05m x 2.75m)

Bedroom 3: 8'1 x 8'0 (2.47m x 2.44m)

SECOND FLOOR

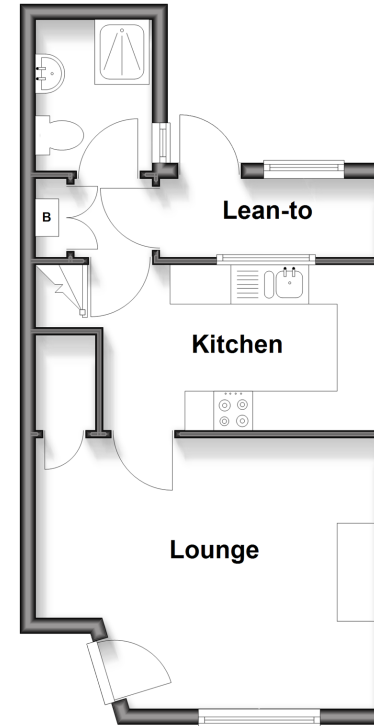
Bedroom 2: 14'0 x 9'0 (4.27m x 2.75m)

OUTSIDE

Rear Garden

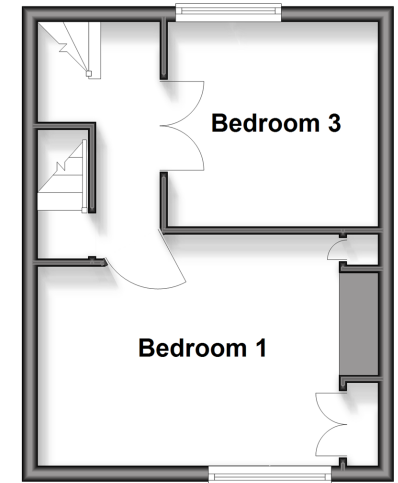
Ground Floor

Approx. 31.4 sq. metres (338.3 sq. feet)



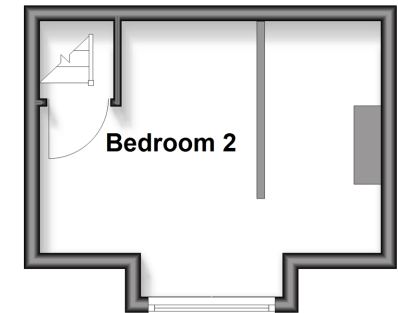
First Floor

Approx. 24.8 sq. metres (266.7 sq. feet)



Second Floor

Approx. 13.9 sq. metres (150.2 sq. feet)



Call Faversham - 01795 535517 ■ wardsofkent.co.uk

- Legal advice should be taken to verify fixtures/fittings, planning, alterations and/or lease details
- Appliances & services are untested, dimensions are approximate and floor plans are not to scale
- Through a Homewise Home For Life Plan people aged 60+ can secure this property for up to 50% less, by purchasing a Lifetime Lease.



10825010/20251006/SP/HR