



Price
£250,000

Freehold

3x  1x  1x 

**Springhead Road,
Faversham, Kent, ME13**

Wards
Helping you move forwards



Main features

- Within walking distance to the town centre and main station
- Substantial garden backing onto open fields
- In need of some general updating
- Perfect first or investment property
- No onward chain

Accommodation

GROUND FLOOR

Entrance Porch
Entrance Hall
Lounge: 16'7 x 12'11 (5.06m x 3.94m)
Kitchen: 12'0 x 8'0 (3.66m x 2.44m)

FIRST FLOOR

Landing
Bedroom 1: 14'10 x 10'8 (4.52m x 3.25m)
Bedroom 2: 10'6 x 10'4 (3.20m x 3.15m)
Bedroom 3: 10'9 x 7'1 (3.28m x 2.16m)
Shower Room

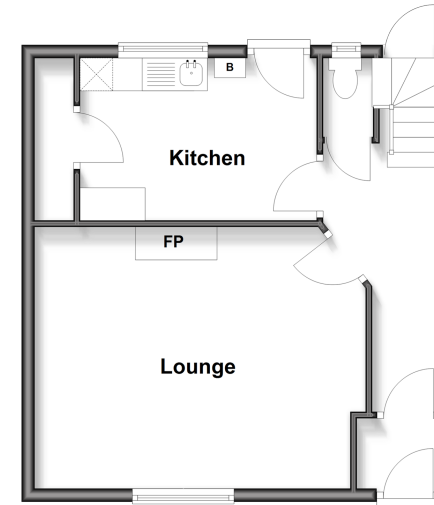
OUTBUILDING

OUTSIDE

Front and Rear Gardens
Parking For 2 Cars

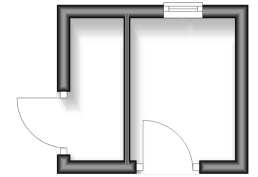
Ground Floor

Approx. 40.8 sq. metres (439.1 sq. feet)



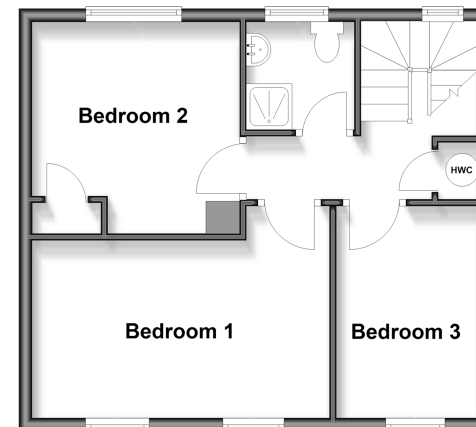
Outbuilding

Approx. 5.5 sq. metres (59.0 sq. feet)



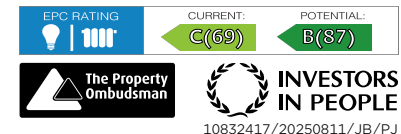
First Floor

Approx. 41.2 sq. metres (443.9 sq. feet)



Call Faversham - 01795 535517 ■ wardsof Kent.co.uk

- Legal advice should be taken to verify fixtures/fittings, planning, alterations and/or lease details
- Appliances & services are untested, dimensions are approximate and floor plans are not to scale



10832417/20250811/JB/PJ