



**Price**  
**£425,000**

**Freehold**

3x  2x  1x 

**Tettenhall Way,  
Faversham, Kent, ME13**

*Wards*  
Helping you move forwards





## Main features

- Immaculate family home in desirable location on the south side of town
- Easy to maintain garden designed for entertaining and total relaxation
- Lovely kitchen/dining room with good quality upgrades
- Naturally light interior with modern decorative finishes
- No chain

## Accommodation

### GROUND FLOOR

Entrance Hall

Cloakroom

Lounge: 16'3 x 10'3 (4.96m x 3.13m)

Kitchen/Diner: 16'3 x 10'5 (4.96m x 3.18m)

### FIRST FLOOR

Landing

Bedroom 1: 12'8 x 8'9 maximum (3.86m x 2.67m)

En-suite Shower Room

Bedroom 2: 12'4 x 8'8 (3.76m x 2.64m)

Bedroom 3: 7'3 x 6'10 (2.21m x 2.08m)

Bathroom

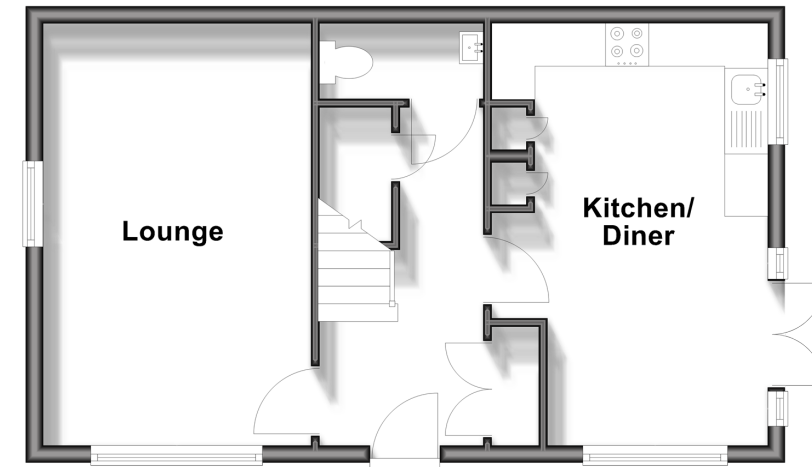
### OUTSIDE

Front and Rear Gardens

Parking For 2 Cars

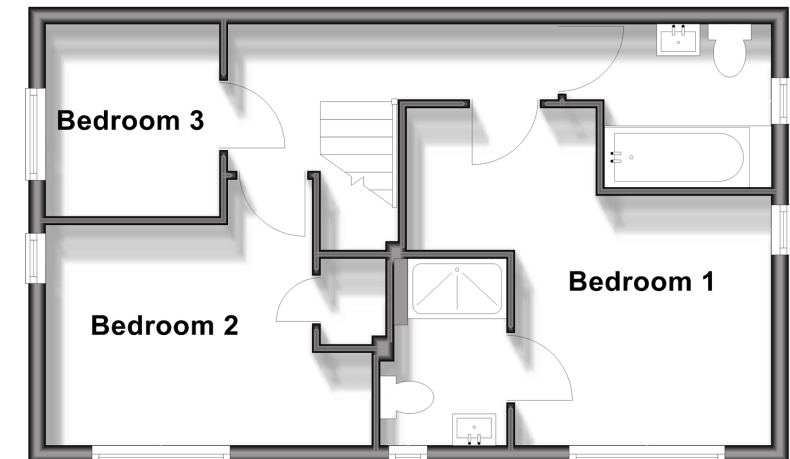
## Ground Floor

Approx. 41.4 sq. metres (445.6 sq. feet)



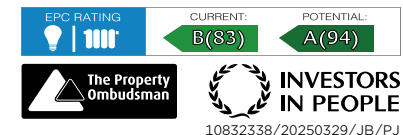
## First Floor

Approx. 41.4 sq. metres (445.6 sq. feet)



**Call Faversham - 01795 535517 ■ [wardsof Kent.co.uk](http://wardsof Kent.co.uk)**

- Legal advice should be taken to verify fixtures/fittings, planning, alterations and/or lease details
- Appliances & services are untested, dimensions are approximate and floor plans are not to scale



10832338/20250329/JB/PJ