



**Price**  
**£425,000**

**Freehold**

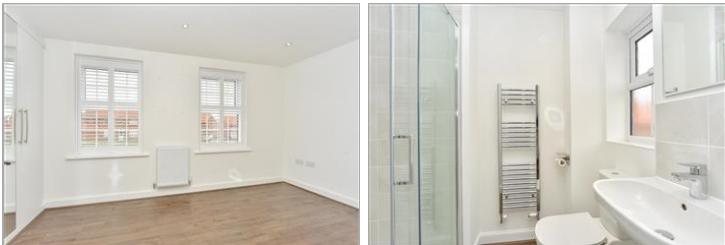
3x  2x  1x 

**Jupiter Grove,  
Faversham, Kent, ME13**

**OVER 60?**

Secure this property  
for up to **59% less!**

*Wards*  
Helping you move forwards



## Main features

- Popular new development with supermarket nearby
- Well planned modern living space, perfect for families
- Attractive landscaped garden to rear
- Walking distance to the town centre and mainline station
- No onward chain

## Accommodation

### GROUND FLOOR

Entrance Hall

Cloakroom

Lounge/Diner: 15'1 x 13'7 (4.60m x 4.14m)

Kitchen: 12'2 x 8'3 (3.71m x 2.52m)

### FIRST FLOOR

Landing

Bedroom 1: 16'11 x 9'1 (5.16m x 2.77m)

En-suite Shower Room

Bedroom 2: 13'7 x 8'11 (4.14m x 2.72m)

Bedroom 3: 10'3 x 8'7 (3.13m x 2.62m)

Bathroom

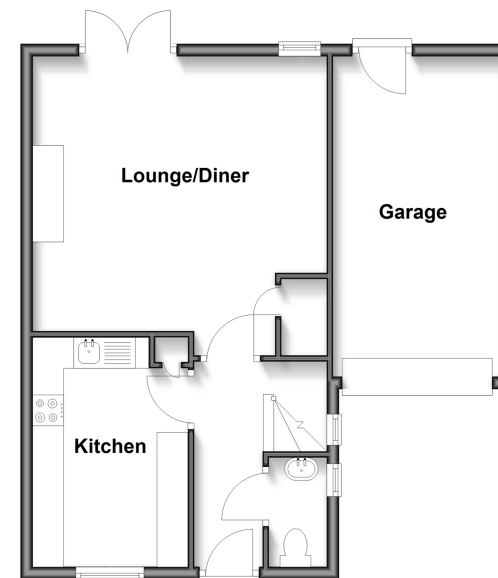
### OUTSIDE

Front and Rear Gardens

Garage: 17'0 x 9'1 (5.19m x 2.77m)

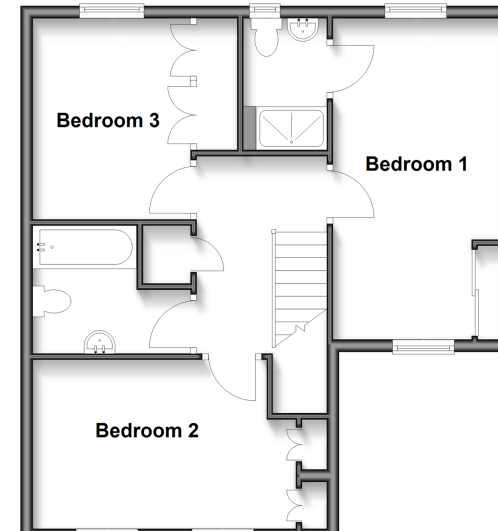
### Ground Floor

Approx. 54.2 sq. metres (583.0 sq. feet)



### First Floor

Approx. 54.3 sq. metres (584.1 sq. feet)



**Call Faversham - 01795 535517 ■ [wardsofkent.co.uk](http://wardsofkent.co.uk)**

- Legal advice should be taken to verify fixtures/fittings, planning, alterations and/or lease details
- Appliances & services are untested, dimensions are approximate and floor plans are not to scale
- Through a Homewise Home For Life Plan people aged 60+ can secure this property for up to 59% less, by purchasing a Lifetime Lease.



10832164/20250527/PJ/PJ