



OVER 60?

Secure this property
for up to **59% less!**

Price
£285,000

Freehold

2x  1x  1x 

**The Ridgeway,
Boughton-Under-Blean,
Faversham, Kent, ME13**

Wards
Helping you move forwards



Main features

- Well presented home in quiet cul de sac in popular village location
- Supermarket, post office and highly rated primary school nearby
- Off road parking to the rear
- Handy location with easy access to Faversham and Canterbury
- Open countryside nearby and local pubs

Accommodation

GROUND FLOOR

Entrance Hall

Lounge/Diner: 19'4 (5.90m) narrowing to 9'5 at narrowest point (2.87m) x 10'11 (3.33m)

Conservatory: 9'5 x 9'4 (2.87m x 2.85m)

Kitchen: 9'9 x 7'4 (2.97m x 2.24m)

FIRST FLOOR

Landing

Bedroom 1: 14'2 x 8'10 (4.32m x 2.69m)

Bedroom 2: 10'2 x 10'2 (3.10m x 3.10m)

Bathroom

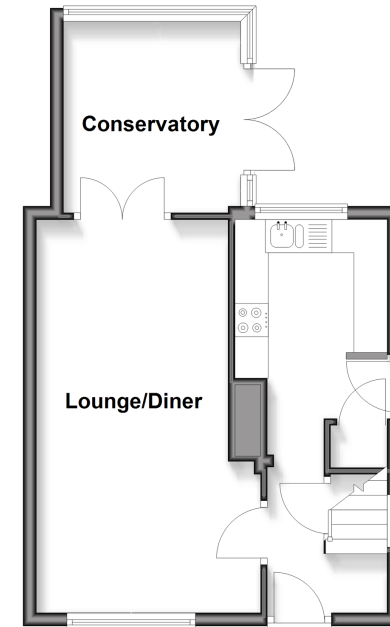
OUTSIDE

Front and Rear Gardens

Parking to Rear for 1 Car

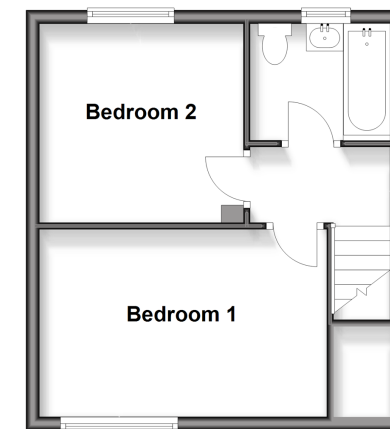
Ground Floor

Approx. 39.1 sq. metres (421.2 sq. feet)



First Floor

Approx. 31.1 sq. metres (334.5 sq. feet)



Call Faversham - 01795 535517 ■ wardsofkent.co.uk

- If buying to let, the energy rating will need to be improved to at least 'E' rating before you can let the property
- Legal advice should be taken to verify fixtures/fittings, planning, alterations and/or lease details
- Appliances & services are untested, dimensions are approximate and floor plans are not to scale
- Through a Homewise Home For Life Plan people aged 60+ can secure this property for up to 59% less, by purchasing a Lifetime Lease.



10832284/20250224/JB/PJ