

OVER 60?

Secure this property
for up to **59% less!**



Guide Price
£575,000
Freehold

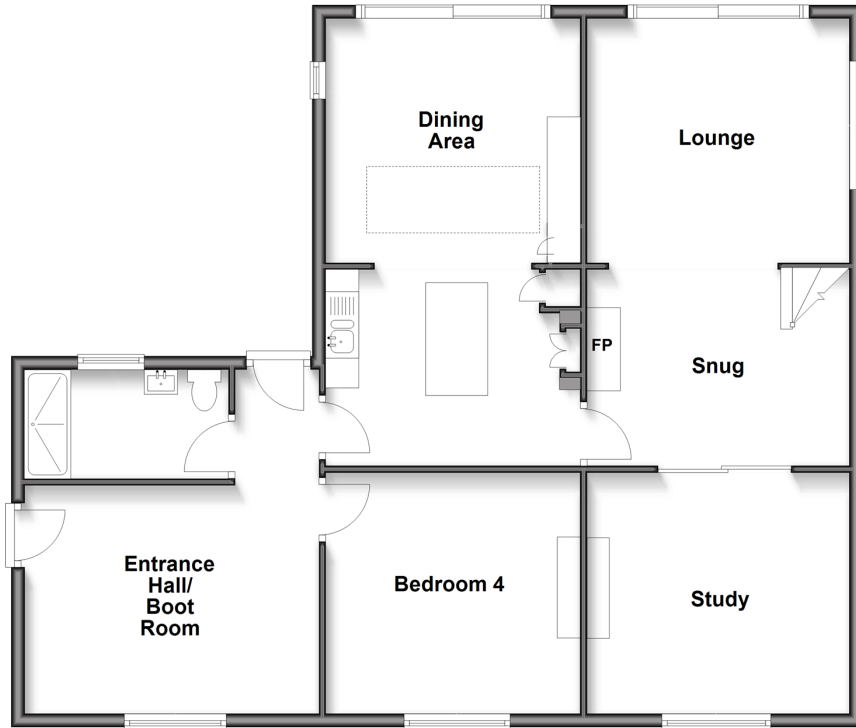
4x  2x  2x 

London Road, Buckland, Faversham, Kent,
ME13

Wards
Helping you move forwards

Ground Floor

Approx. 105.9 sq. metres (1140.1 sq. feet)



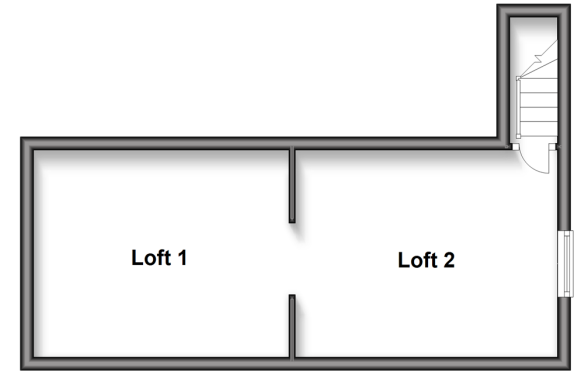
First Floor

Approx. 52.5 sq. metres (564.8 sq. feet)



Second Floor

Approx. 26.0 sq. metres (279.9 sq. feet)



Accommodation

GROUND FLOOR

Entrance Hall/Boot Room

Shower Room

Kitchen Area: 13'0 x 10'0 (3.97m x 3.05m)

Dining Area: 13'0 x 11'11 (3.97m x 3.63m)

Snug: 17'0 x 13'11 (5.19m x 4.24m)

Lounge: 21'9 x 14'0 (6.63m x 4.27m)

Study: 13'0 x 12'0 (3.97m x 3.66m)

Bedroom 4: 12'7 x 11'11 (3.84m x 3.63m)

FIRST FLOOR

Landing

Bedroom 1: 11'9 x 10'1 (3.58m x 3.08m)

Bedroom 2: 13'1 x 11'11 (3.99m x 3.63m)

Bedroom 3: 12'11 x 11'10 (3.94m x 3.61m)

Bathroom

SECOND FLOOR

Loft 1: 13'0 x 10'2 (3.97m x 3.10m)

Loft 2: 13'0 x 10'1 (3.97m x 3.08m)

OUTSIDE

Front Garden

Substantial Rear Garden

Off Road Parking For 2 Cars



Main features

- Extended and refurbished offering great family living space
- Potential to create an annexe space for extended families
- Fabulous views to the rear across fields and farmland
- Easy access to good road links for Faversham, M2 and coastal towns
- Off road parking for numerous cars



Nearest Schools

Primary Schools: Luddenham School 0.9 miles, Bysing Wood Primary 1.2 miles

Secondary Schools: The Abbey School 1.9 miles, Queen Elizabeth's Grammar School 2.2 miles



Transport Information

Train Stations: Teynham 1.9 miles, Faversham 2.0 miles, Sittingbourne 4.9 miles



Address

London Road, Buckland, Faversham, Kent, ME13



Directions

For directions to this property please contact us.



Wards
Helping you move forwards

Call Faversham Branch 01795 535517 ■ wardsofkent.co.uk



- If buying to let, the energy rating will need to be improved to at least 'E' rating before you can let the property
- Appliances & services are untested, dimensions are approximate and floor plans are not to scale

- Legal advice should be taken to verify fixtures/fittings, planning, alterations and/or lease details
- Through a Homewise Home For Life Plan people aged 60+ can secure this property for up to 59% less, by purchasing a Lifetime Lease.



10831535/20250319/HR/PJ