



**Price**

**£400,000**

**Freehold**

3x  2x  1x 

**Evers Road, Faversham,  
Kent, ME13**

**OVER 60?**

Secure this property  
for up to **59% less!**

*Wards*  
Helping you move forwards





## Main features

- Fabulous 5 year old family home still under NHBC warranty
- Exceptional quality interior with upgraded kitchen
- Good sized private rear garden and parking
- Popular new development close to new country park with lovely walks
- Highly rated primary school close by

## Accommodation

### GROUND FLOOR

Entrance Hall

Cloakroom

Lounge: 15'1 x 10'4 (4.60m x 3.15m)

Kitchen/Diner: 17'8 x 11'4 (5.39m x 3.46m)

### FIRST FLOOR

Landing

Bedroom 1: 11'3 x 10'7 (3.43m x 3.23m)

En-Suite Shower Room

Bedroom 2: 10'1 x 9'11 (3.08m x 3.02m)

Bedroom 3: 10'1 x 7'5 (3.08m x 2.26m)

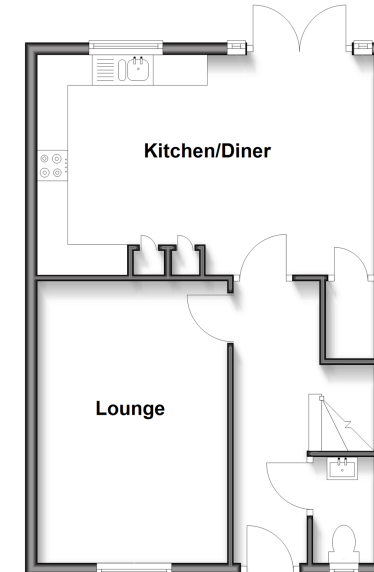
Bathroom

### OUTSIDE

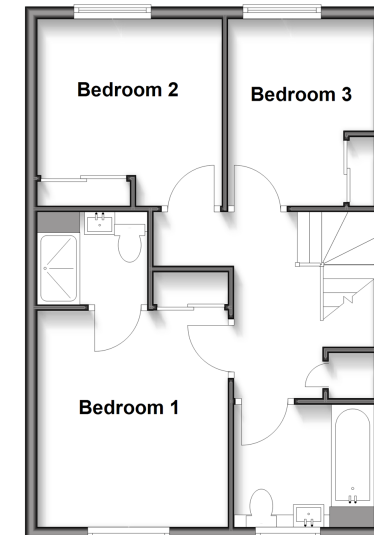
Front and Rear Gardens

Parking

**Ground Floor**  
Approx. 45.8 sq. metres (493.0 sq. feet)



**First Floor**  
Approx. 45.8 sq. metres (493.0 sq. feet)



**Call Faversham - 01795 535517 ■ [wardsof Kent.co.uk](http://wardsof Kent.co.uk)**

- Legal advice should be taken to verify fixtures/fittings, planning, alterations and/or lease details
- Appliances & services are untested, dimensions are approximate and floor plans are not to scale
- Through a Homewise Home For Life Plan people aged 60+ can secure this property for up to 59% less, by purchasing a Lifetime Lease.



10832250/20250203/JB/PJ