



Price
£415,000

Freehold

3x  2x  1x 

**The Birch, Faversham
Lakes, Faversham, Kent,
ME13 7TW**

Wards
Helping you move forwards



Main features

- Ready to move into before Stamp Duty changes
- Contemporary high specification new build family home
- Stunning fitted Nobilia kitchen with fully integrated Bosch appliances
- Roca sanitaryware to bathroom and en-suite
- Off-road parking
- Patio and laid to lawn rear garden
- Delightful setting amongst a country park and lakes providing fabulous walks

Accommodation

GROUND FLOOR

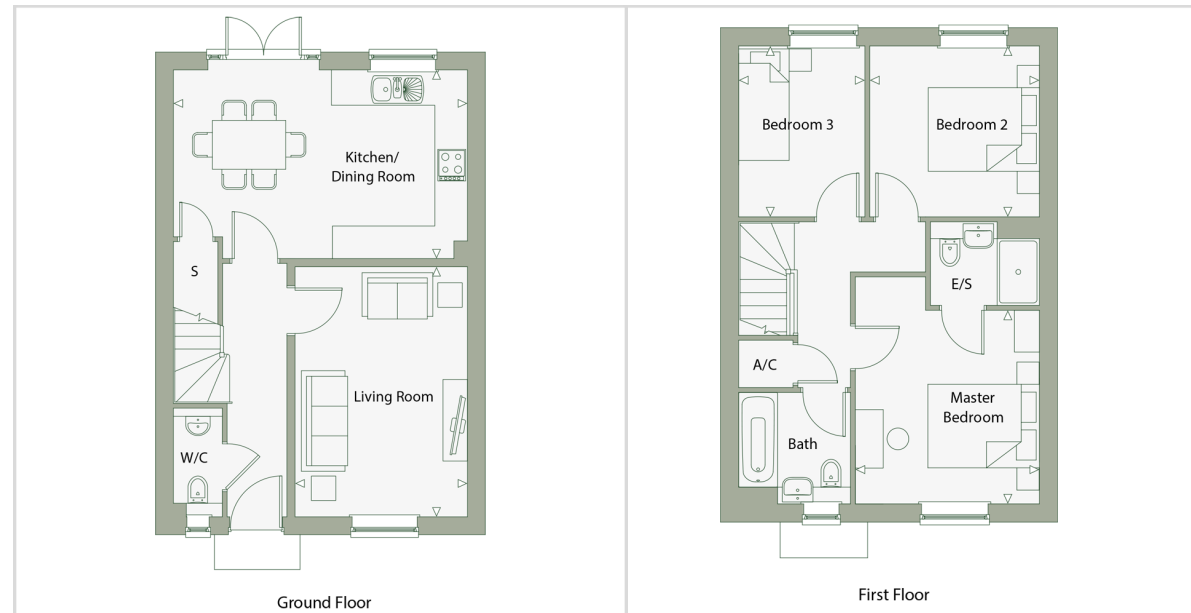
Entrance Hall
Lounge: 15'1 x 10'4 (4.60m x 3.15m)
Kitchen/Diner: 17'9 x 11'5 (5.41m x 3.48m)
Cloakroom

FIRST FLOOR

Landing
Bedroom 1: 11'5 x 10'10 (3.48m x 3.30m)
En-suite Shower Room
Bedroom 2: 10'1 x 10'0 (3.08m x 3.05m)
Bedroom 3: 10'1 x 7'5 (3.08m x 2.26m)
Bathroom

OUTSIDE

Rear Garden
Off-road Parking



Call Faversham - 01795 535517 ■ wardsofkent.co.uk

- If buying to let, the energy rating will need to be improved to at least 'E' rating before you can let the property
- Appliances & services are untested, dimensions are approximate and floor plans are not to scale

■ Legal advice should be taken to verify fixtures/fittings, planning, alterations and/or lease details



10832290/20250122/JB/PJ