



Price
£315,000

Freehold

2x  1x  1x 

**The Bay, Faversham
Lakes, Faversham, Kent,
ME13 7TW**

Wards
Helping you move forwards



Main features

- **Final release of 2 bedroom homes, just two available!**
- **Contemporary well designed 2 bedroom semi-detached house in a delightful setting**
- **Fully integrated Bosch appliances in the modern Nobilia kitchen**
- **Open plan kitchen/living/dining area with doors leading out onto the garden**
- **Rear Garden with patio and turf**
- **Allocated off-road parking for 2 cars**

Accommodation

GROUND FLOOR

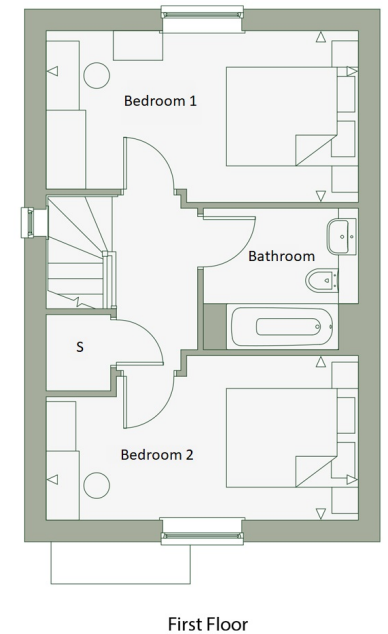
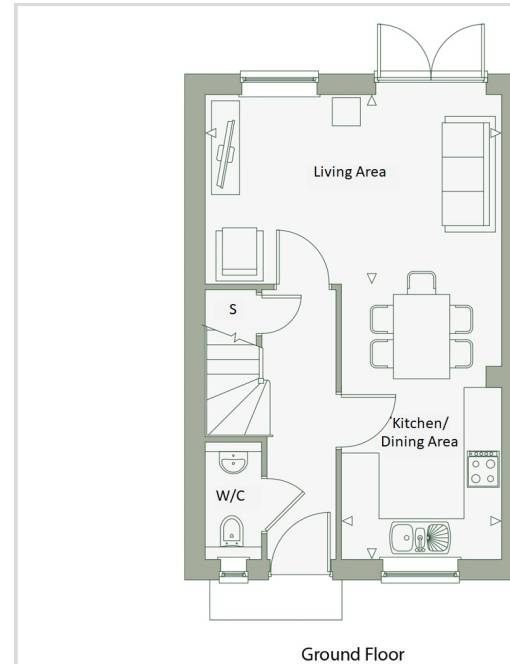
Entrance Hall
 Kitchen/Dining Area: 14'5 x 8'4 (4.40m x 2.54m)
 Lounge Area: 15'7 x 9'11 (4.75m x 3.02m)
 Cloakroom

FIRST FLOOR

Landing
 Bedroom 1: 15'7 x 8'7 (4.75m x 2.62m)
 Bedroom 2: 15'7 x 8'3 (4.75m x 2.52m)
 Bathroom

OUTSIDE

Rear Garden
 Two Allocated Parking Spaces



Call Faversham - 01795 535517 ■ wardsofkent.co.uk

- If buying to let, the energy rating will need to be improved to at least 'E' rating before you can let the property
- Appliances & services are untested, dimensions are approximate and floor plans are not to scale

■ Legal advice should be taken to verify fixtures/fittings, planning, alterations and/or lease details

