



Price

£415,000

Freehold

3x  2x  1x 

The Rowan, Faversham Lakes, Faversham,
Kent, ME13 7TW

Wards
Helping you move forwards



Main features

- Contemporary well designed family home in a delightful setting
- Nobilia kitchen with fully integrated appliances
- Open plan kitchen/dining room
- En-suite shower room to main bedroom
- Allocated parking for 2 cars
- Close to Oare Creek and open plan countryside providing fabulous walks

Accommodation

GROUND FLOOR

Entrance Hall

Lounge: 18'6 x 9'5 (5.64m x 2.87m)

Kitchen Area: 9'2 x 9'2 (2.80m x 2.80m)

Dining Area: 9'4 x 9'2 (2.85m x 2.80m)

Utility: 6'8 x 5'1 (2.03m x 1.55m)

Cloakroom

FIRST FLOOR

Landing

Bedroom 1: 13'3 x 9'4 (4.04m x 2.85m)

En-suite Shower Room

Bedroom 2: 9'10 x 9'7 (3.00m x 2.92m)

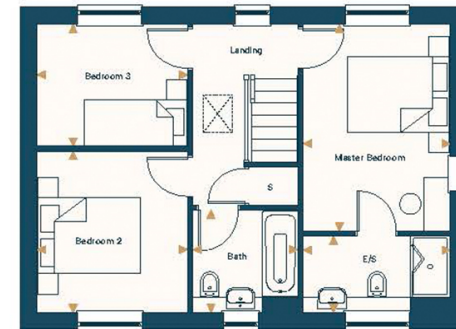
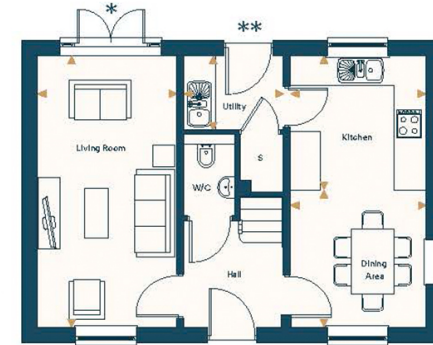
Bedroom 3: 9'7 x 8'4 (2.92m x 2.54m)

Bathroom

OUTSIDE

Rear Garden

Two Allocated Parking Spaces



Call Faversham - 01795 535517 ■ wardsofkent.co.uk

■ If buying to let, the energy rating will need to be improved to at least 'E' rating before you can let the property

■ Appliances & services are untested, dimensions are approximate and floor plans are not to scale

■ Legal advice should be taken to verify fixtures/fittings, planning, alterations and/or lease details



10832274/20250306/JB/PJ