



Price
£335,000

Freehold

2x  1x  1x 

**Bethell Road,
Faversham, Kent, ME13**

OVER 60?

Secure this property
for up to **59% less!**

Wards
Helping you move forwards



Main features

- As good as new! Immaculate condition
- Great catchment area for primary and secondary schools
- 10 Year NHBC warranty
- Easy to maintain garden
- Open plan living accommodation

Accommodation

GROUND FLOOR

Entrance Hall

Cloakroom

Kitchen: 10'7 x 8'4 (3.23m x 2.54m)

Lounge: 15'6 x 13'7 (4.73m x 4.14m)

FIRST FLOOR

Landing

Bedroom 1: 15'6 x 8'6 (4.73m x 2.59m)

Bedroom 2: 15'6 x 8'1 (4.73m x 2.47m)

Bathroom

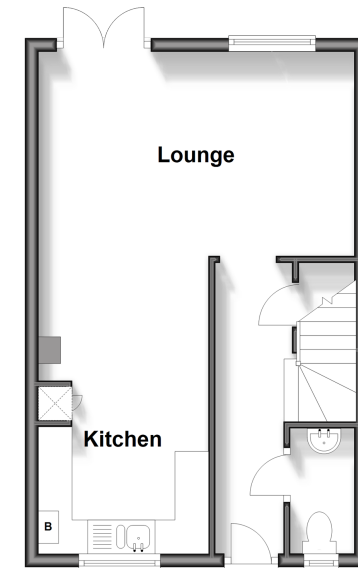
OUTSIDE

Front and Rear Gardens

Parking For 3 Cars

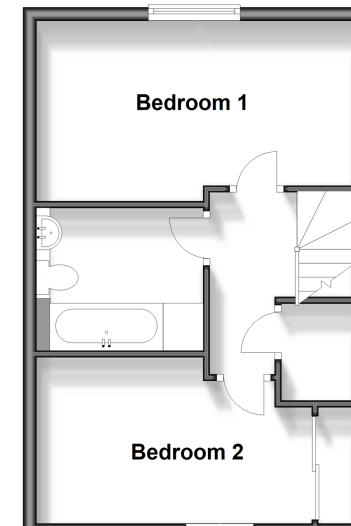
Ground Floor

Approx. 34.9 sq. metres (375.5 sq. feet)



First Floor

Approx. 34.9 sq. metres (375.5 sq. feet)



Call Faversham - 01795 535517 ■ wardsof Kent.co.uk

- Legal advice should be taken to verify fixtures/fittings, planning, alterations and/or lease details
- Appliances & services are untested, dimensions are approximate and floor plans are not to scale
- Through a Homewise Home For Life Plan people aged 60+ can secure this property for up to 59% less, by purchasing a Lifetime Lease.



10832242/20241204/JB/SJ