



Price
£355,000

Freehold

3x  1x  1x 

**Cressway, Faversham,
Kent, ME13**

OVER 60?

Secure this property
for up to **59% less!**

Wards
Helping you move forwards



Main features

- Well designed family home in good sized triangular plot
- Potential to extend subject to planning consent
- Modern shower and downstairs cloakroom
- No onward chain
- Perfect opportunity to create your dream home

Accommodation

GROUND FLOOR

Entrance Hall

Lounge/Diner: 23'8 (7.22m) narrowing to 8'4 at narrowest point (2.54m) x 12'5 (3.79m)

Kitchen: 9'10 x 7'10 (3.00m x 2.39m)

Cloakroom

Lean To Utility Area

FIRST FLOOR

Landing

Bedroom 1: 12'4 x 10'5 (3.76m x 3.18m)

Bedroom 2: 12'5 x 9'5 (3.79m x 2.87m)

Bedroom 3: 8'3 x 7'11 (2.52m x 2.41m)

Show Room

OUTSIDE

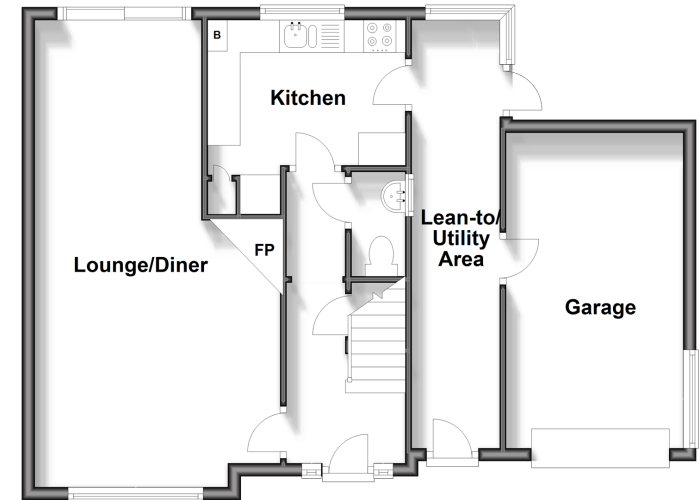
Front, Side and Rear Gardens

Integral Garage

Parking

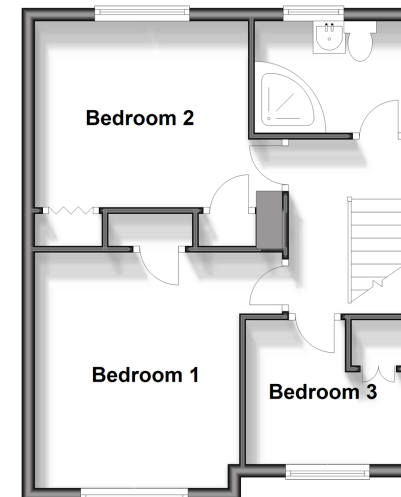
Ground Floor

Approx. 63.6 sq. metres (684.1 sq. feet)



First Floor

Approx. 40.2 sq. metres (432.4 sq. feet)



Call Faversham - 01795 535517 ■ wardsof Kent.co.uk

- Legal advice should be taken to verify fixtures/fittings, planning, alterations and/or lease details
- Appliances & services are untested, dimensions are approximate and floor plans are not to scale
- Through a Homewise Home For Life Plan people aged 60+ can secure this property for up to 59% less, by purchasing a Lifetime Lease.



10832163/20250102/PJ/PJ