



**Price**  
**£450,000**

**Freehold**

4x  2x  1x 

**Jupiter Grove,  
Faversham, Kent, ME13**

**OVER 60?**

Secure this property  
for up to **59% less!**

*Wards*  
Helping you move forwards



## Main features

- Immaculate good sized family accommodation
- Built by Barrett Homes - still under 10 year NHBC warranty
- Substantial kitchen/diner making the perfect hub for entertaining
- Naturally light interior and pleasant gardens
- Ample space to work from home

## Accommodation

### GROUND FLOOR

- Entrance Hall
- Cloakroom
- Lounge: 16'3 x 10'1 (4.96m x 3.08m)
- Kitchen/Diner: 18'5 x 12'1 (5.62m x 3.69m)

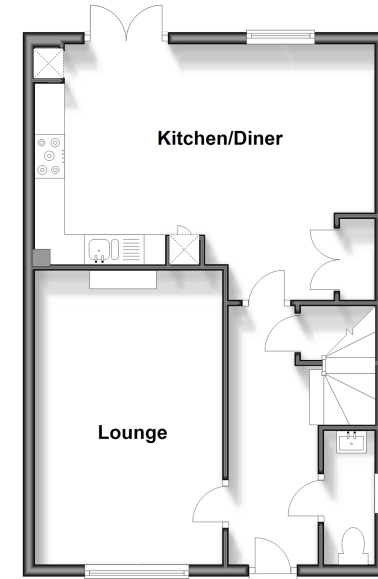
### FIRST FLOOR

- Landing
- Bedroom 1: 10'5 x 9'1 (3.18m x 2.77m)
- En-Suite Shower Room
- Bedroom 2: 11'9 x 9'2 (3.58m x 2.80m)
- Bedroom 3: 9'0 x 6'9 (2.75m x 2.06m)
- Bedroom 4: 8'11 x 7'1 (2.72m x 2.16m)
- Bathroom

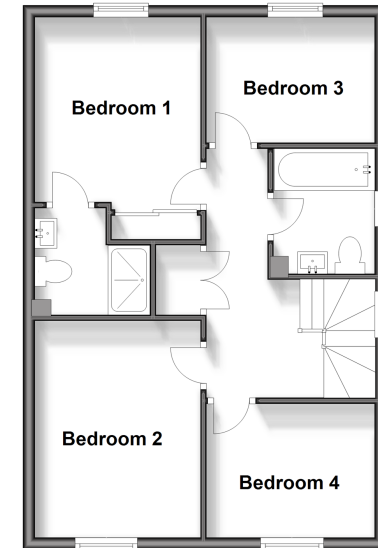
### OUTSIDE

- Front and Rear Gardens
- Driveway for 3 Cars

**Ground Floor**  
Approx. 49.4 sq. metres (532.1 sq. feet)



**First Floor**  
Approx. 49.4 sq. metres (532.1 sq. feet)



**Call Faversham - 01795 535517 ■ [wardsokent.co.uk](http://wardsokent.co.uk)**

- Legal advice should be taken to verify fixtures/fittings, planning, alterations and/or lease details
- Appliances & services are untested, dimensions are approximate and floor plans are not to scale
- Through a Homewise Home For Life Plan people aged 60+ can secure this property for up to 59% less, by purchasing a Lifetime Lease.



10831810/20241016/JB/PJ