



Price
£435,000

Freehold

4x  2x  2x 

**Wheler Court,
Faversham, Kent, ME13**

OVER 60?

Secure this property
for up to **59% less!**

Wards
Helping you move forwards



Main features

- Modern house imaginatively extended
- Tucked away in a small cul-de-sac with private gardens
- Garage plus additional parking
- Substantial lounge with wood burner and separate dining room
- Added bonus of an office

Accommodation

GROUND FLOOR

- Entrance Hall
- Cloakroom
- Lounge: 18'6 x 10'8 (5.64m x 3.25m)
- Office: 10'6 x 7'7 (3.20m x 2.31m)
- Dining Area: 11'2 x 8'1 (3.41m x 2.47m)
- Kitchen: 17'7 x 7'7 (5.36m x 2.31m)

FIRST FLOOR

- Landing
- Bedroom 1: 10'8 x 10'0 (3.25m x 3.05m)
- En-Suite Shower Room
- Bedroom 2: 12'9 x 7'6 (3.89m x 2.29m)
- Bedroom 3: 10'11 x 8'6 (3.33m x 2.59m)
- Bedroom 4: 8'4 x 7'5 (2.54m x 2.26m)
- Bathroom

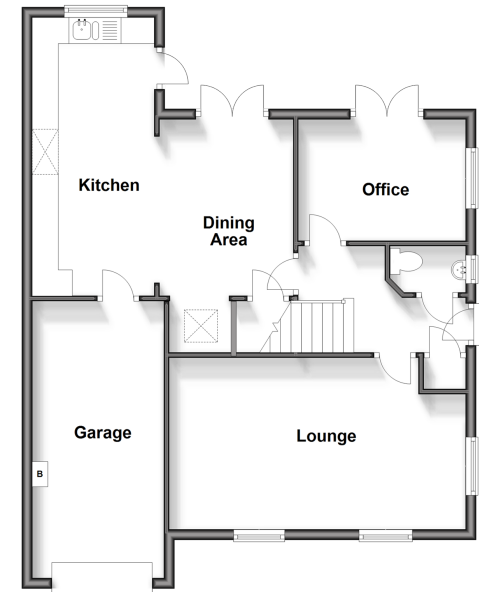
OUTBUILDING

- Garage: 17'1 x 8'6 (5.21m x 2.59m)

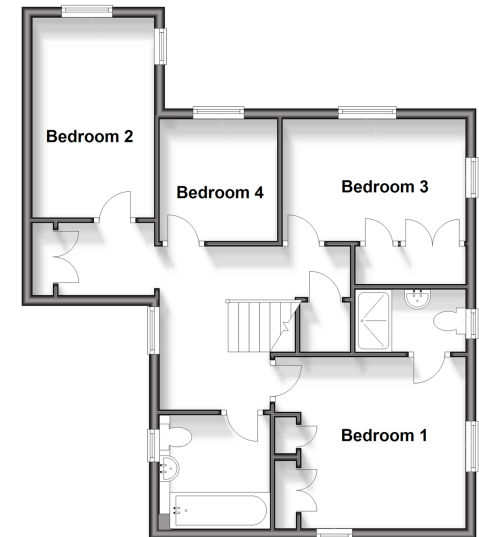
OUTSIDE

- Driveway
- Front and Rear Gardens

Ground Floor
Approx. 72.2 sq. metres (777.3 sq. feet)



First Floor
Approx. 59.0 sq. metres (634.6 sq. feet)



Call Faversham - 01795 535517 ■ wardsof Kent.co.uk

- Legal advice should be taken to verify fixtures/fittings, planning, alterations and/or lease details
- Appliances & services are untested, dimensions are approximate and floor plans are not to scale
- Through a Homewise Home For Life Plan people aged 60+ can secure this property for up to 59% less, by purchasing a Lifetime Lease.



10832196/20241011/JB/PJ