



Guide Price
£110,000

Leasehold

1x  1x  1x 

**Park Court, Faversham,
Kent, ME13**

OVER 60?

Secure this property
for up to **59% less!**

Wards
Helping you move forwards



Main features

- Vacant retirement property on Ground Floor with access to gardens
- No onward chain
- Walking distance to town centre and mainline station
- Communal gardens with space to sit outside
- Some cosmetic updating required

Accommodation

GROUND FLOOR

Entrance Hall

Lounge/Diner: 14'0 x 13'7 (4.27m x 4.14m)

Kitchen: 13'6 x 6'10 (4.12m x 2.08m)

Bedroom: 12'2 x 10'6 (3.71m x 3.20m)

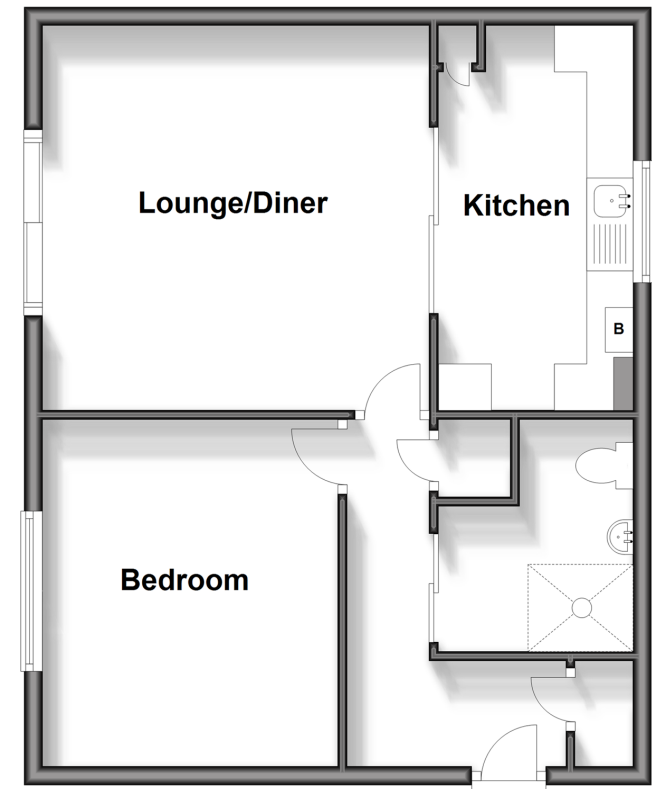
Shower Room

OUTSIDE

Communal Gardens

Ground Floor

Approx. 50.9 sq. metres (547.4 sq. feet)



Call Faversham - 01795 535517 ■ wardsofkent.co.uk

- Legal advice should be taken to verify fixtures/fittings, planning, alterations and/or lease details
- Appliances & services are untested, dimensions are approximate and floor plans are not to scale
- Through a Homewise Home For Life Plan people aged 60+ can secure this property for up to 59% less, by purchasing a Lifetime Lease.



10832194/20250423/HR/PJ