



Price

£340,000

Freehold

3x  2x  1x 

Selby Court, Lower
Road, Teynham,
Sittingbourne, Kent,
ME9

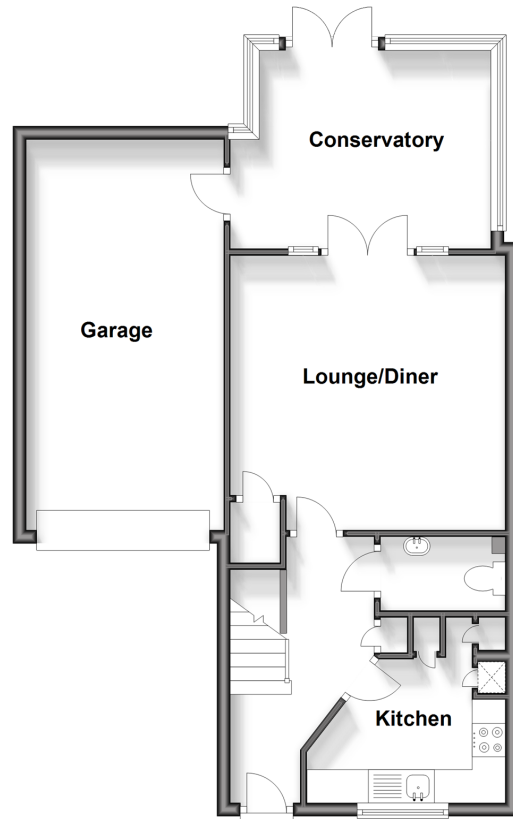
OVER 60?

Secure this property
for up to **59% less!**

Wards
Helping you move forwards

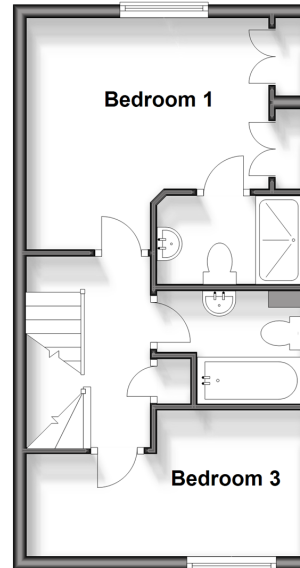
Ground Floor

Approx. 63.8 sq. metres (687.0 sq. feet)



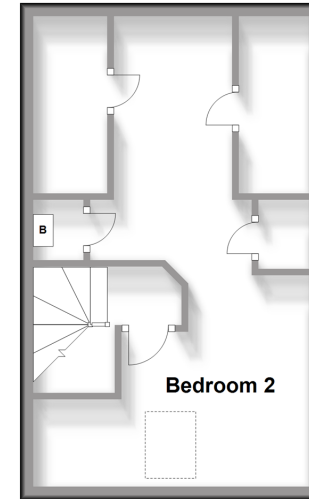
First Floor

Approx. 33.6 sq. metres (361.6 sq. feet)



Second Floor

Approx. 29.4 sq. metres (316.1 sq. feet)



Accommodation

GROUND FLOOR

Entrance Hall
Cloakroom
Kitchen: 9'9 x 9'5 (2.97m x 2.87m)
Lounge/Diner: 13'8 x 13'0 (4.17m x 3.97m)
Conservatory: 12'4 x 9'2 (3.76m x 2.80m)

FIRST FLOOR

Landing
Bedroom 1: 12'1 x 11'4 (3.69m x 3.46m)
En-Suite Shower Room
Bedroom 3: 13'9 x 7'4 (4.19m x 2.24m)
Bathroom

SECOND FLOOR

Landing
Bedroom 2: 23'6 (7.17m) narrowing to 5'11 at narrowest point (1.80m) x 13'8 (4.17m)

OUTSIDE

Front and Rear Gardens
Garage
Parking for 4 Cars



Main features

- Immaculate family home with high quality interior
- Spacious accommodation arranged over 3 floors
- Luxury fitted kitchen and useful conservatory currently used as a dining room
- Village location with shops and mainline station nearby
- Garage and parking for 4 cars



Nearest Schools

Primary Schools: Teynham Parochial C of E Primary 0.3 miles, Lynsted and Norton Primary 1.4 miles

Secondary Schools: Meadowfield School 2.4 miles, Sittingbourne Community College 2.4 miles



Transport Information

Train Stations: Teynham 0.2 miles, Sittingbourne 3.4 miles, Faversham 3.6 miles



Address

Selby Court, Lower Road, Teynham, Sittingbourne, Kent, ME9



Directions

For directions to this property please contact us.



Wards
Helping you move forwards

Call Faversham Branch 01795 535517 ■ wardsof Kent.co.uk



■ Legal advice should be taken to verify fixtures/fittings, planning, alterations and/or lease details ■ Appliances & services are untested, dimensions are approximate and floor plans are not to scale
■ Through a Homewise Home For Life Plan people aged 60+ can secure this property for up to 59% less, by purchasing a Lifetime Lease.



10832065/20240930/JB/PJ