



Price

£400,000

Freehold

3x  2x  1x 

**The Birch, Faversham
Lakes, Faversham, Kent,
ME13 7TW**

Wards
Helping you move forwards



Main features

- Contemporary high specification 3 bedroom new build family home
- Stunning fitted Nobilia kitchen with fully integrated Bosch appliances
- Roca sanitaryware to bathroom and ensuite
- Patio and laid to lawn rear garden

Accommodation

GROUND FLOOR

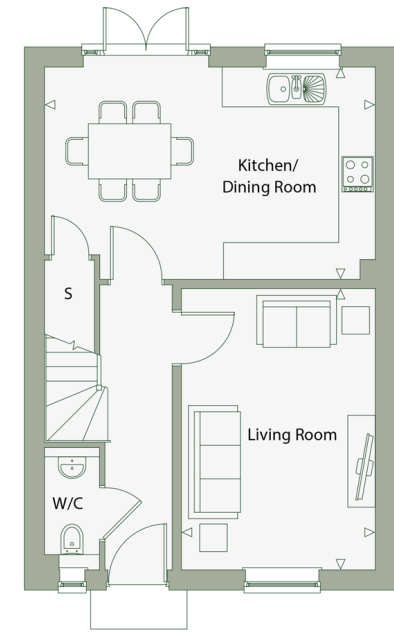
Entrance Hall
 Lounge: 15'1 x 10'4 (4.60m x 3.15m)
 Kitchen/Diner: 17'9 x 11'5 (5.41m x 3.48m)
 Cloakroom

FIRST FLOOR

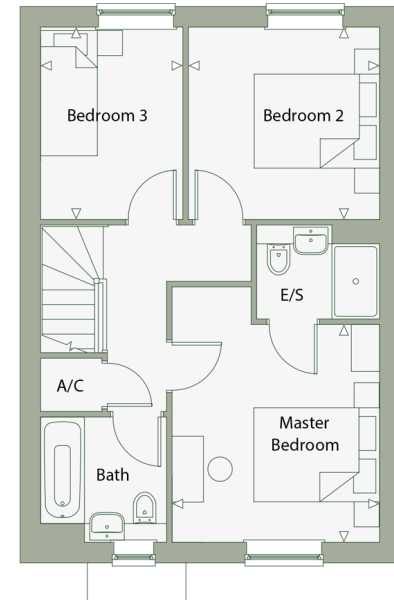
Landing
 Bedroom 1: 11'5 x 10'10 (3.48m x 3.30m)
 En-suite Shower Room
 Bedroom 2: 10'1 x 10'0 (3.08m x 3.05m)
 Bedroom 3: 10'1 x 7'5 (3.08m x 2.26m)
 Bathroom

OUTSIDE

Front Garden
 Rear Garden
 Off Road Parking



Ground Floor



First Floor

Call Faversham - 01795 535517 ■ wardsof Kent.co.uk

- If buying to let, the energy rating will need to be improved to at least 'E' rating before you can let the property
- Legal advice should be taken to verify fixtures/fittings, planning, alterations and/or lease details
- Appliances & services are untested, dimensions are approximate and floor plans are not to scale



10832206/20240913/JB/PJ