



Price
£340,000

Freehold

2x  1x  1x 

**The Bay, Faversham
Lakes, Ham Road,
Faversham, Kent, ME13
7TW**

Wards
Helping you move forwards



Main features

- Open plan living with Nobilia kitchen and integrated Bosch appliances
- French doors leading out onto the garden and patio
- Off road parking for 2 cars
- Delightful setting amongst a country park and lakes
- Close to fabulous walks and Oare Creek

Accommodation

GROUND FLOOR

Entrance Hall

Cloakroom

Kitchen/Dining Area: 14'5 x 8'4 (4.40m x 2.54m)

Living Area: 15'7 x 9'11 (4.75m x 3.02m)

FIRST FLOOR

Landing

Bedroom 1: 15'7 x 8'7 (4.75m x 2.62m)

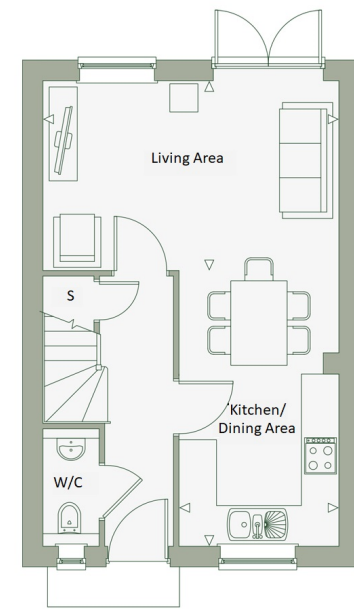
Bedroom 2: 15'7 x 8'3 (4.75m x 2.52m)

Bathroom

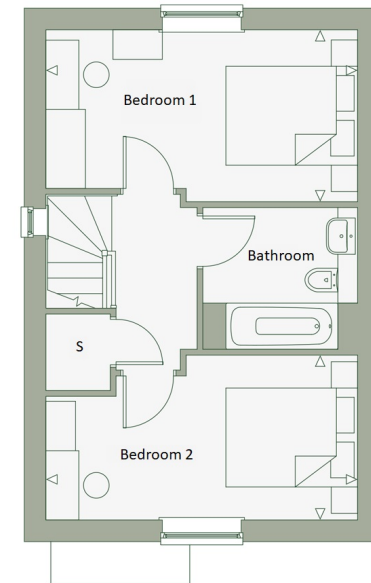
OUTSIDE

Front and Rear Garden

Off Road Parking for Two Cars



Ground Floor



First Floor

Call Faversham - 01795 535517 ■ wardsof Kent.co.uk

- If buying to let, the energy rating will need to be improved to at least 'E' rating before you can let the property
- Legal advice should be taken to verify fixtures/fittings, planning, alterations and/or lease details
- Appliances & services are untested, dimensions are approximate and floor plans are not to scale



10832205/20240911/JB/PJ