



OVER 60?

Secure this property
for up to **59% less!**

Price

£430,000

Freehold

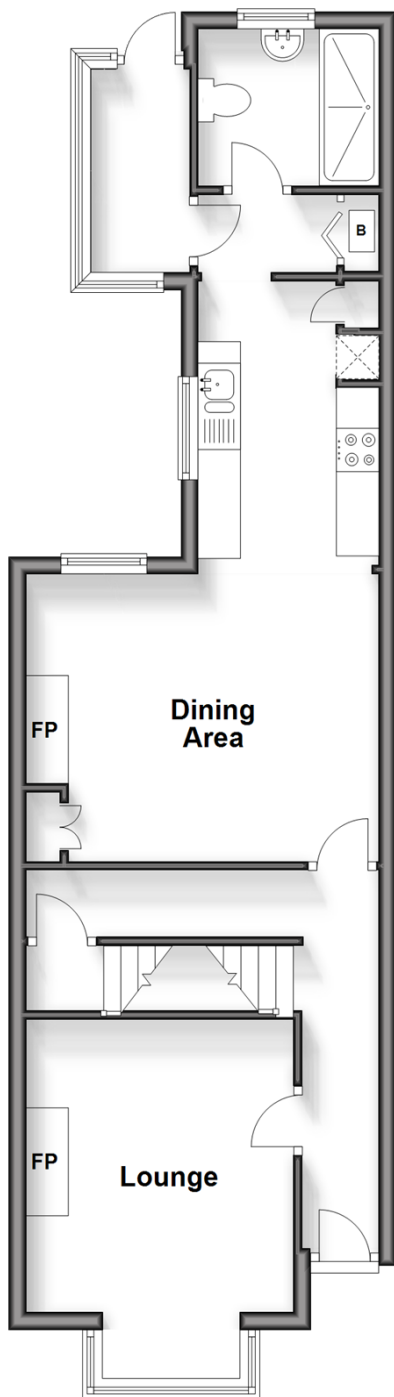
3x  1x  2x 

**Norman Road,
Faversham, Kent, ME13**

Wards
Helping you move forwards

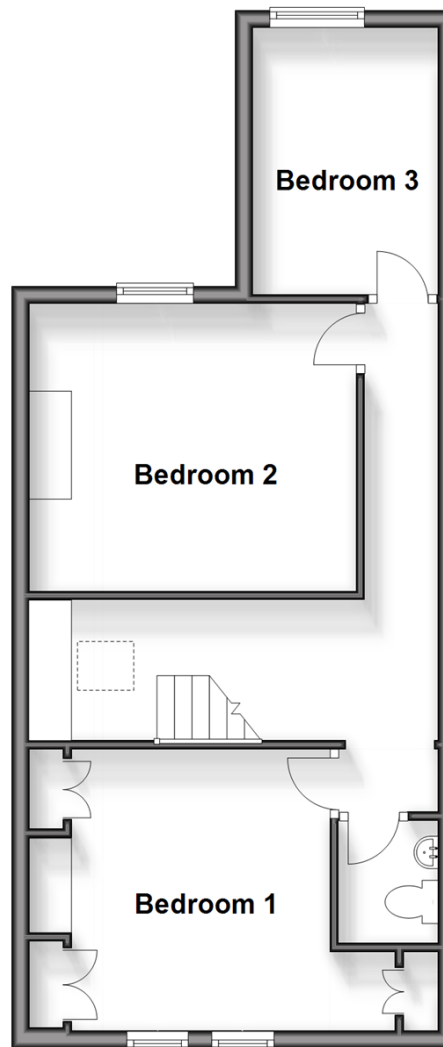
Ground Floor

Approx. 51.7 sq. metres (556.9 sq. feet)



First Floor

Approx. 47.3 sq. metres (509.4 sq. feet)



Accommodation

GROUND FLOOR

Entrance Hall

Lounge: 13'11 x 10'3 (4.24m x 3.13m)

Dining Area: 13'8 x 10'11 (4.17m x 3.33m)

Kitchen: 10'0 x 6'11 (3.05m x 2.11m)

Rear Lobby

Shower Room

Conservatory

BASEMENT

Cellar: 13'5 x 10'10 (4.09m x 3.30m)

FIRST FLOOR

Landing

Bedroom 1: 11'5 x 11'0 (3.48m x 3.36m)

Cloakroom

Bedroom 2: 12'4 x 10'11 (3.76m x 3.33m)

Bedroom 3: 9'10 x 7'0 (3.00m x 2.14m)

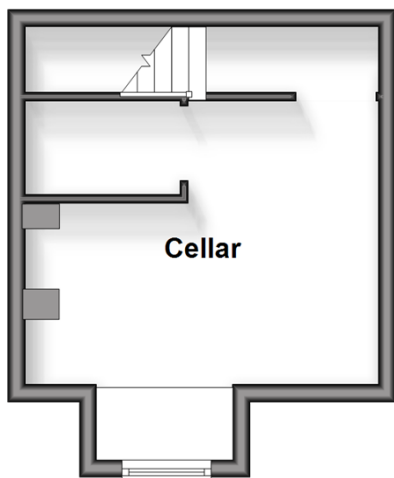
OUTSIDE

Off Road Parking

Rear Garden

Basement

Approx. 18.6 sq. metres (200.0 sq. feet)





Main features

- Attractive house in the heart of Faversham
- Traditionally laid out living space with useful cellar
- Good sized rear garden perfect for those with children
- Short walk to town centre shops, swimming pool and mainline station
- Off road parking for 1 car



Nearest Schools

Primary Schools: Ethelbert Road Infant School 0.4 miles, Davington Primary 0.7 miles

Secondary Schools: The Abbey School 0.6 miles, Queen Elizabeth's Grammar School 0.7 miles



Transport Information

Train Stations: Faversham 0.3 miles, Selling 4.1 miles, Teynham 4.6 miles



Address

Norman Road, Faversham, Kent, ME13



Directions

For directions to this property please contact us.



Call Faversham Branch 01795 535517 ■ wardsofkent.co.uk



■ Legal advice should be taken to verify fixtures/fittings, planning, alterations and/or lease details ■ Appliances & services are untested, dimensions are approximate and floor plans are not to scale
■ Through a Homewise Home For Life Plan people aged 60+ can secure this property for up to 59% less, by purchasing a Lifetime Lease.



10831901/20241127/JB/PJ