



**OVER 60?**

Secure this property  
for up to **59% less!**

**Price**  
**£315,000**

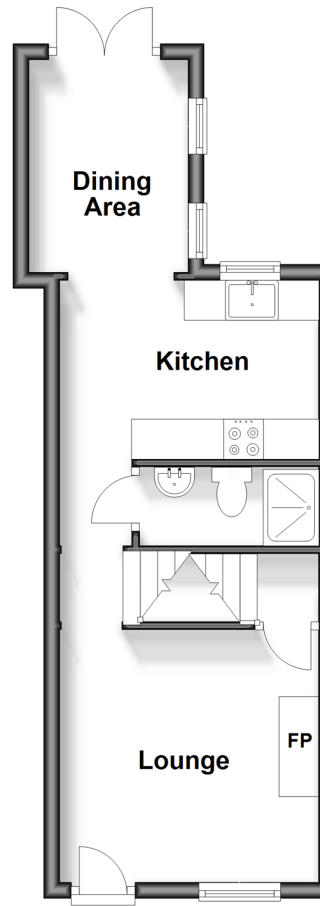
**Freehold**

2x  2x  2x 

**St. John's Road,  
Faversham, Kent, ME13**

*Wards*  
Helping you move forwards

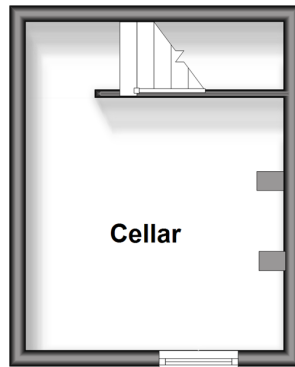
**Ground Floor**  
Approx. 30.0 sq. metres (322.7 sq. feet)



**Split Level First Floor**  
Approx. 29.8 sq. metres (320.7 sq. feet)



**Basement**  
Approx. 13.4 sq. metres (143.9 sq. feet)



## Accommodation

### GROUND FLOOR

Lounge: 10'7 x 10'5 (3.23m x 3.18m)  
Dining Area: 9'0 x 6'5 (2.75m x 1.96m)  
Kitchen: 10'1 x 7'3 (3.08m x 2.21m)  
Shower Room

### BASEMENT

Cellar: 10'4 x 10'3 (3.15m x 3.13m)

### FIRST FLOOR

Landing  
Bedroom 1: 14'4 into alcove x 11'11  
(4.37m x 3.63m)  
Bathroom  
Bedroom 2: 12'0 x 10'6 (3.66m x 3.20m)

### OUTSIDE

Rear Garden



## Main features

- Individual period home in prime town centre location
- Walking distance to shops and mainline station, perfect for commuters
- Perfect first or investment opportunity
- Downstairs shower room plus upstairs bathroom
- No onwards chain

### Nearest Schools

Primary Schools: St Mary of Charity CE (Aided) Primary 0.3 miles, Ethelbert Road Infant School 0.7 miles

Secondary Schools: Queen Elizabeth's Grammar School 0.6 miles, The Abbey School 1.0 miles

### Transport Information

Train Stations: Faversham 0.3 miles, Selling 4.2 miles, Teynham 5.2 miles

### Address

St. John's Road, Faversham, Kent, ME13

### Directions

For directions to this property please contact us.



*Wards*  
Helping you move forwards

Call Faversham Branch 01795 535517 ■ [wardsof Kent.co.uk](http://wardsof Kent.co.uk)



- Legal advice should be taken to verify fixtures/fittings, planning, alterations and/or lease details
- Appliances & services are untested, dimensions are approximate and floor plans are not to scale
- Through a Homewise Home For Life Plan people aged 60+ can secure this property for up to 59% less, by purchasing a Lifetime Lease.



10832080/20240909/JB/PJ