



Price
£550,000

Freehold

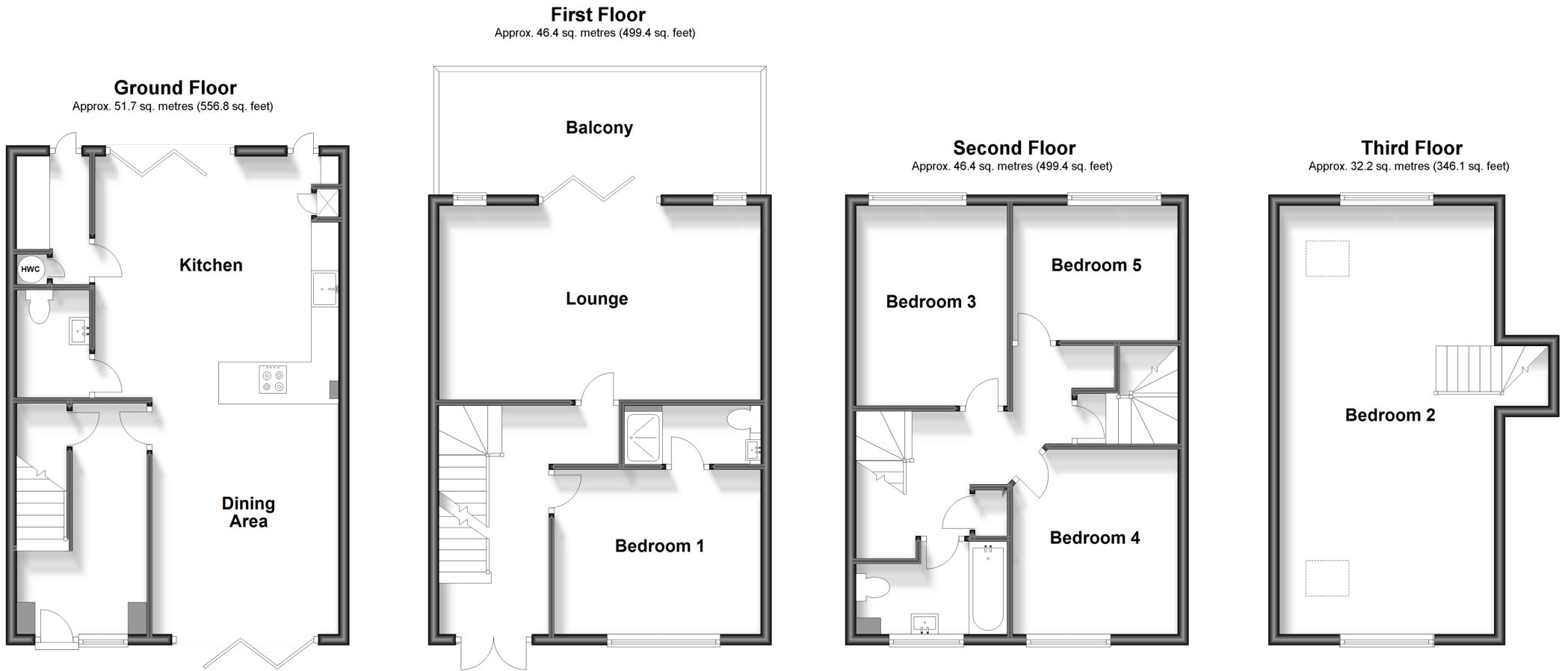
5x  1x  2x 

**Waterside Close,
Faversham, Kent, ME13**

OVER 60?

Secure this property
for up to **59% less!**

Wards
Helping you move forwards



Accommodation

GROUND FLOOR

Entrance Hall
 Kitchen/Dining Area: 28'7 (8.72m) narrowing to 11'3 at narrowest point (3.43m) x 14'9 (4.50m)
 Utility Room: 7'7 x 4'2 (2.31m x 1.27m)
 Cloakroom

FIRST FLOOR

Landing
 Lounge: 19'5 x 11'6 (5.92m x 3.51m)
 Bedroom 1: 12'6 x 9'10 (3.81m x 3.00m)
 En-Suite Shower Room

SECOND FLOOR

Landing
 Bedroom 3: 11'0 x 9'11 (3.36m x 3.02m)
 Bedroom 4: 12'0 x 9'1 (3.66m x 2.77m)
 Bedroom 5: 10'0 x 8'1 (3.05m x 2.47m)
 Bathroom

THIRD FLOOR

Bedroom 2: 25'10 x 13'0 (7.88m x 3.97m)

OUTSIDE

Rear Courtyard Garden
 Parking for 2 cars



Main features

- Stunning town house with extensive views across Faversham Creek
- Large family orientated kitchen/breakfast/dining room
- Rear first floor balcony leading from lounge
- Car parking for 2 cars including electric charging point
- No onward chain



Nearest Schools

Primary Schools: Davington Primary 0.3 miles, Ethelbert Road Infant School 0.7 miles

Secondary Schools: Queen Elizabeth's Grammar School 0.2 miles, The Abbey School 0.9 miles



Transport Information

Train Stations: Faversham 0.6 miles, Selling 3.6 miles, Teynham 3.7 miles



Address

Waterside Close, Faversham, Kent, ME13



Directions

For directions to this property please contact us.



Call Faversham Branch 01795 535517 ■ wardsofkent.co.uk



■ Legal advice should be taken to verify fixtures/fittings, planning, alterations and/or lease details ■ Appliances & services are untested, dimensions are approximate and floor plans are not to scale
■ Through a Homewise Home For Life Plan people aged 60+ can secure this property for up to 59% less, by purchasing a Lifetime Lease.



10831029/20250312/PJ/PJ