



Price
£250,000

Freehold

2x  1x  2x 

**Westgate Road,
Faversham, Kent, ME13**

OVER 60?

Secure this property
for up to **59% less!**

Wards
Helping you move forwards



Main features

- Attractive house in town centre location
- Easy to manage gardens
- Short walk to local shops, park and mainline station
- Double glazed windows and gas central heating
- En-suite shower room upstairs and separate downstairs toilet

Accommodation

GROUND FLOOR

- Lounge: 11'9 x 10'9 (3.58m x 3.28m)
- Dining Room: 11'10 x 10'9 (3.61m x 3.28m)
- Kitchen: 9'10 x 6'5 (3.00m x 1.96m)
- Separate Toilet

FIRST FLOOR

- Landing
- Bedroom 1: 11'9 x 10'9 (3.58m x 3.28m)
- En-Suite Shower Room
- Bedroom 2: 11'10 x 10'11 (3.61m x 3.33m)

OUTBUILDING

- Block Built Garden Shed

OUTSIDE

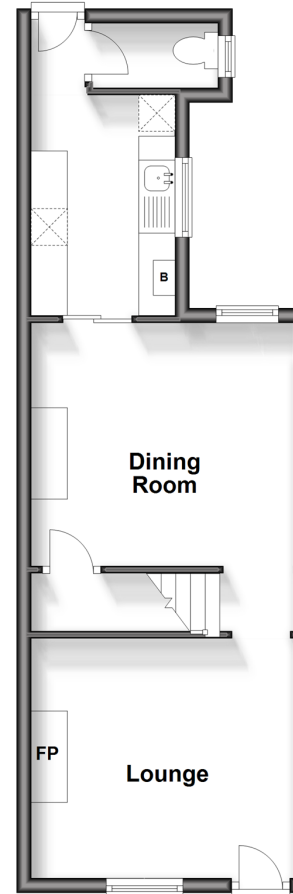
- Courtyard Garden

Call Faversham - 01795 535517 ■ wardsforkent.co.uk

- Legal advice should be taken to verify fixtures/fittings, planning, alterations and/or lease details
- Appliances & services are untested, dimensions are approximate and floor plans are not to scale
- Through a Homewise Home For Life Plan people aged 60+ can secure this property for up to 59% less, by purchasing a Lifetime Lease.

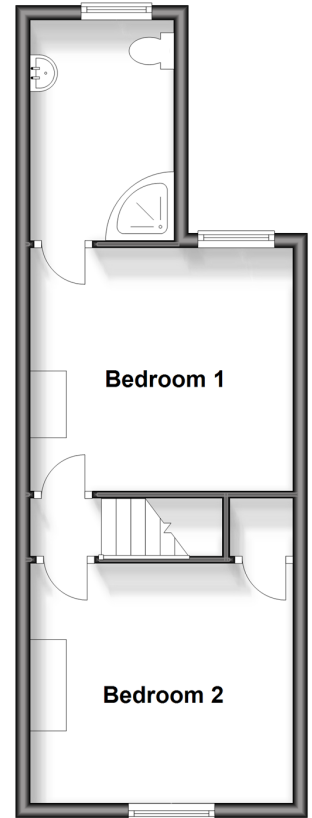
Ground Floor

Approx. 36.2 sq. metres (389.5 sq. feet)



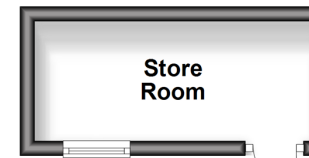
Split Level First Floor

Approx. 33.7 sq. metres (362.9 sq. feet)



Outbuilding

Approx. 6.3 sq. metres (67.8 sq. feet)



10832142/20240924/PJ/PJ