



Price
£325,000

Freehold

3x  2x  1x 

**Old Bakery Mews, The
Street,
Boughton-Under-Blean,
Kent, ME13**

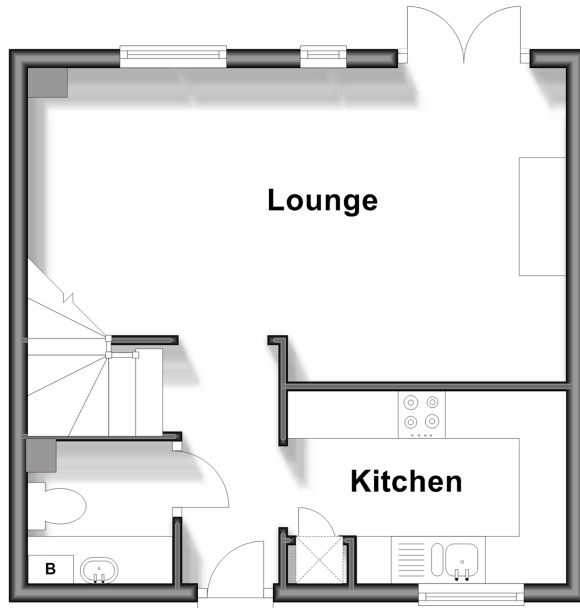
OVER 60?

Secure this property
for up to **59% less!**

Wards
Helping you move forwards

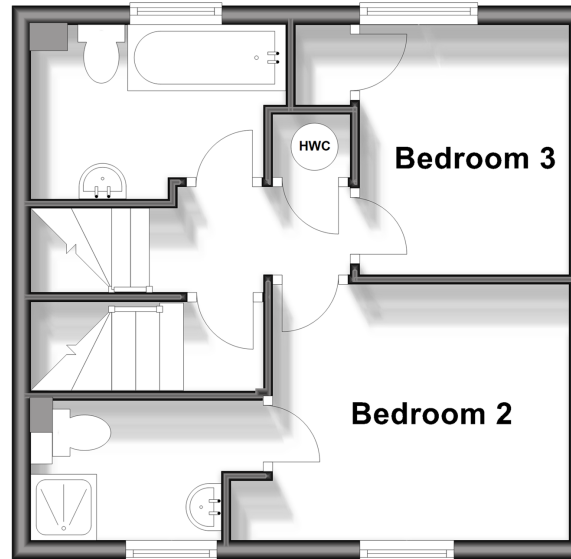
Ground Floor

Approx. 31.2 sq. metres (336.2 sq. feet)



First Floor

Approx. 31.2 sq. metres (336.2 sq. feet)



Second Floor

Approx. 26.4 sq. metres (283.7 sq. feet)



Accommodation

GROUND FLOOR

Entrance Hall
Cloakroom/Utility Area
Lounge: 18'9 x 10'8 (5.72m x 3.25m)
Kitchen: 9'8 x 6'9 (2.95m x 2.06m)

FIRST FLOOR

Bedroom 2: 9'3 x 7'6 (2.82m x 2.29m)
En-Suite Shower Room
Bedroom 3: 15'3 x 12'5 (4.65m x 3.79m)
Bathroom

SECOND FLOOR

Bedroom 1: 11'9 x 8'10 (3.58m x 2.69m)

OUTSIDE

Terraced Rear Garden
Open Barn Style Garage



Main features

- Delightful period town house in small Mews Style development
- Village location with good amenities and easy access to Canterbury & Faversham
- No onward chain
- Open Barn Style garage parking
- Lovely country walks through open countryside and farmland nearby



Nearest Schools

Primary Schools: Boughton-under-Blean and Dunkirk Primary 0.1 miles, Hernhill C of E Primary 1.4 miles

Secondary Schools: Queen Elizabeth's Grammar School 2.6 miles, The Abbey School 2.7 miles



Transport Information

Train Stations: Selling 2.3 miles, Faversham 3.4 miles, Chilham 5.2 miles



Address

Old Bakery Mews, The Street, Boughton-Under-Blean, Kent, ME13



Directions

For directions to this property please contact us.



Wards
Helping you move forwards

Call Faversham Branch 01795 535517 ■ wardsof Kent.co.uk



- Legal advice should be taken to verify fixtures/fittings, planning, alterations and/or lease details
- Appliances & services are untested, dimensions are approximate and floor plans are not to scale
- Through a Homewise Home For Life Plan people aged 60+ can secure this property for up to 59% less, by purchasing a Lifetime Lease.



EPC RATING
CURRENT: **C(75)** POTENTIAL: **B(87)**

10832134/20241105/SJ/PJ