



Guide Price
£300,000

Freehold

3x  1x  1x 

**Berkeley Close, Dunkirk,
Faversham, Kent, ME13**

OVER 60?

Secure this property
for up to **59% less!**

Wards
Helping you move forwards



Main features

- Deceptively spacious modern house
- Extended ground floor creating a substantial lounge and dining area
- Quiet cul De sac location close to small popular village
- Delightful country walks nearby
- Easy access to Faversham, Canterbury and Whitstable

Accommodation

GROUND FLOOR

Entrance Hall

Lounge: 16'8 x 10'5 (5.08m x 3.18m)

Dining Area: 17'5 x 11'1 (5.31m x 3.38m)

Kitchen: 8'6 x 7'6 (2.59m x 2.29m)

FIRST FLOOR

Landing

Bedroom 1: 12'0 x 9'2 (3.66m x 2.80m)

Bedroom 2: 9'1 x 8'0 (2.77m x 2.44m)

Bedroom 3: 12'4 maximum x 9'0 (3.76m x 2.75m)

Bathroom

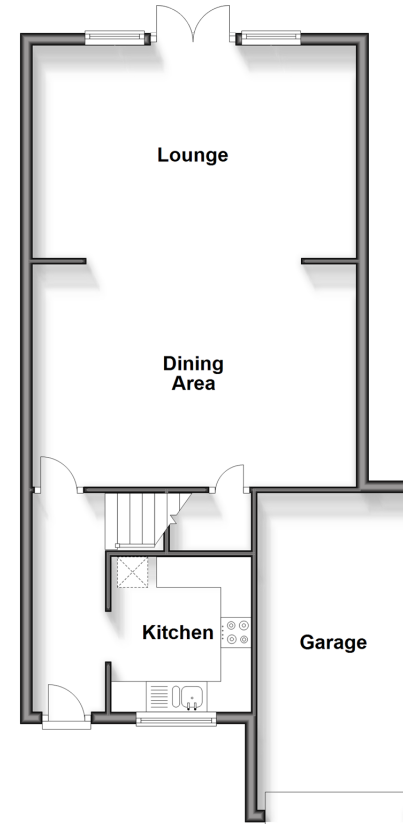
OUTSIDE

Front and Rear Gardens

Garage

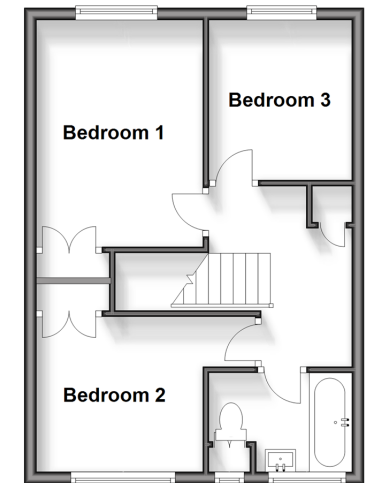
Ground Floor

Approx. 65.6 sq. metres (706.2 sq. feet)



First Floor

Approx. 38.5 sq. metres (414.6 sq. feet)



Call Faversham - 01795 535517 ■ wardsofkent.co.uk

- Legal advice should be taken to verify fixtures/fittings, planning, alterations and/or lease details
- Appliances & services are untested, dimensions are approximate and floor plans are not to scale
- Through a Homewise Home For Life Plan people aged 60+ can secure this property for up to 59% less, by purchasing a Lifetime Lease.



10831920/20250414/PJ/PJ