



Price

£400,000

Freehold

3x  2x  2x 

Lower Road, Faversham,  
Kent, ME13

**OVER 60?**

Secure this property  
for up to **59% less!**

*Wards*  
Helping you move forwards





## Main features

- Modern well planned house set back from the road
- Good sized family orientated accommodation
- Private easy to manage gardens
- Well presented interior in good decorative order
- Short distance to town centre shops, schools and mainline station

## Accommodation

### GROUND FLOOR

Entrance Hall

Cloakroom

Lounge: 18'6 x 10'9 (5.64m x 3.28m)

Dining Room: 10'2 x 7'8 (3.10m x 2.34m)

Kitchen: 14'6 x 8'0 (4.42m x 2.44m)

### FIRST FLOOR

Landing

Bedroom 1: 10'9 x 9'11 (3.28m x 3.02m)

En-suite Shower Room

Bedroom 2: 10'10 x 8'5 (3.30m x 2.57m)

Bedroom 3: 8'5 x 7'4 (2.57m x 2.24m)

Bathroom

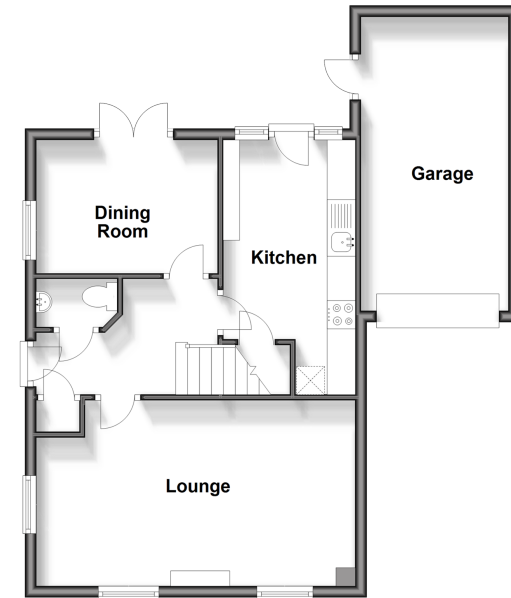
### OUTSIDE

Front and Rear Garden

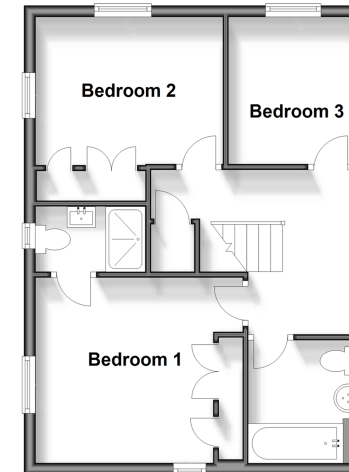
Garage

Parking for several cars

**Ground Floor**  
Approx. 58.4 sq. metres (628.4 sq. feet)



**First Floor**  
Approx. 44.5 sq. metres (479.2 sq. feet)



**Call Faversham - 01795 535517 ■ [wardsokent.co.uk](http://wardsokent.co.uk)**

- Legal advice should be taken to verify fixtures/fittings, planning, alterations and/or lease details
- Appliances & services are untested, dimensions are approximate and floor plans are not to scale
- Through a Homewise Home For Life Plan people aged 60+ can secure this property for up to 59% less, by purchasing a Lifetime Lease.



10832054/20240515/JB/PJ