



Price
£550,000

Freehold

5x  2x  1x 

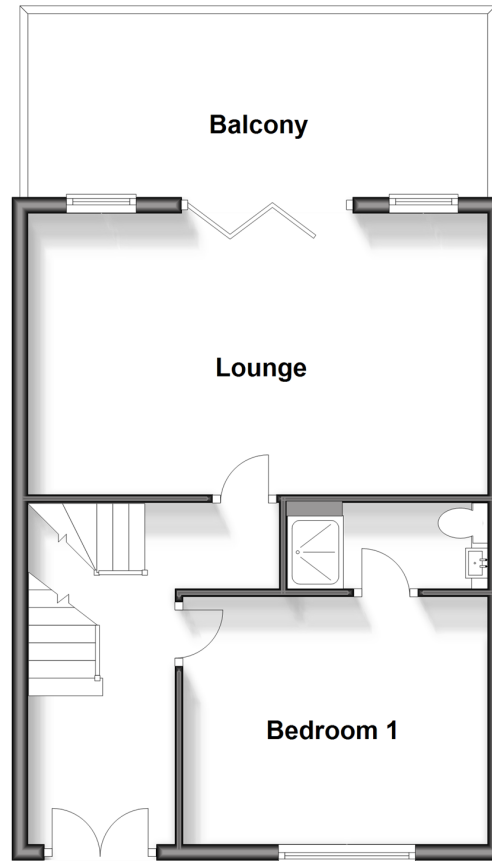
**Waterside Close,
Faversham, Kent, ME13**

OVER 60?

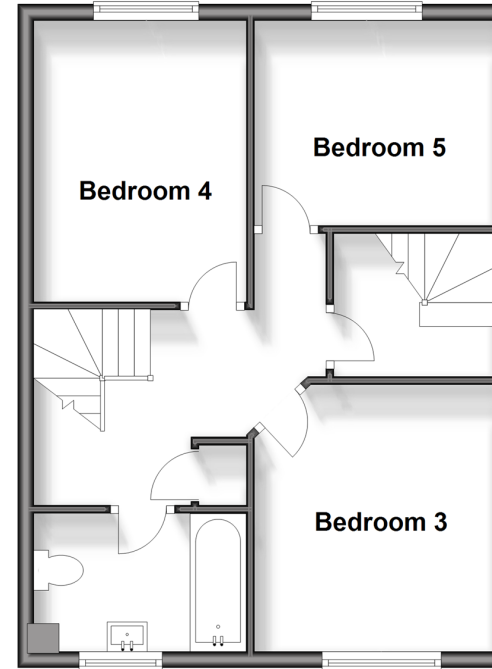
Secure this property
for up to **59% less!**

Wards
Helping you move forwards

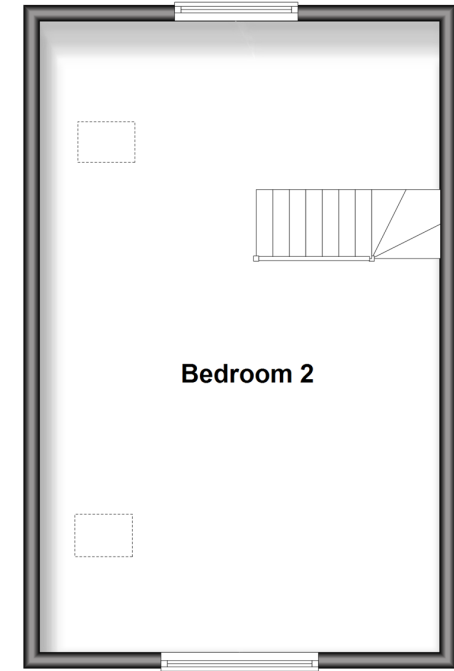
First Floor
Approx. 45.2 sq. metres (486.4 sq. feet)



Second Floor
Approx. 45.2 sq. metres (486.4 sq. feet)

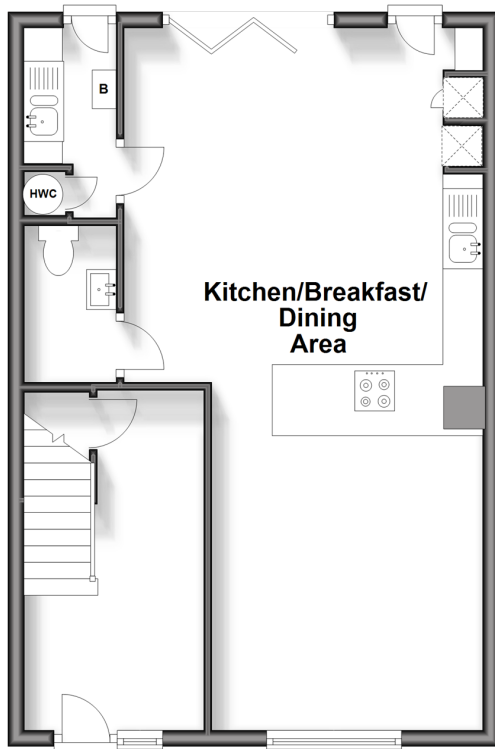


Third Floor
Approx. 39.4 sq. metres (423.6 sq. feet)



Ground Floor

Approx. 50.3 sq. metres (541.2 sq. feet)



Accommodation

GROUND FLOOR

Entrance Hall
Cloakroom
Utility Area
Kitchen/Breakfast/Dining Area: 28'7 x 14'2 (8.72m x 4.32m)

FIRST FLOOR

Landing
Lounge: 19'3 x 11'6 (5.87m x 3.51m)
Balcony
Bedroom 1 : 12'4 x 9'11 (3.76m x 3.02m)
En-suite Shower Room

SECOND FLOOR

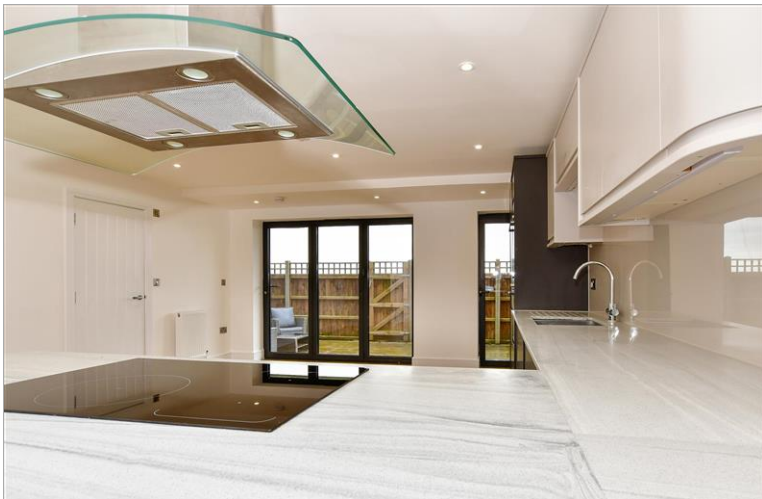
Landing
Bedroom 3 : 10'11 x 9'8 (3.33m x 2.95m)
Bedroom 4 : 12'2 x 9'3 (3.71m x 2.82m)
Bedroom 5 : 9'8 x 8'11 (2.95m x 2.72m)
Bathroom

THIRD FLOOR

Bedroom 2 : 25'10 x 13'0 (7.88m x 3.97m)

OUTSIDE

Parking for 2 cars
Rear Garden



Main features

- Stunning town house close to Faversham Creek
- Bespoke, luxury kitchens with resin work tops and integrated appliances
- Spacious living areas with bifold doors leading to the balcony
- Far reaching views across Faversham marshes
- Parking for 2 cars

Nearest Schools

Primary Schools: St Mary of Charity CE (Aided) Primary 0.4 miles, Davington Primary 0.4 miles

Secondary Schools: Queen Elizabeth's Grammar School 0.2 miles, The Abbey School 1.0 miles

Transport Information

Train Stations: Faversham 0.6 miles, Selling 3.5 miles, Teynham 3.9 miles

Address

Waterside Close, Faversham, Kent, ME13

Directions

For directions to this property please contact us.



Wards
Helping you move forwards

Call Faversham Branch 01795 535517 ■ wardsof Kent.co.uk



- Legal advice should be taken to verify fixtures/fittings, planning, alterations and/or lease details
- Appliances & services are untested, dimensions are approximate and floor plans are not to scale
- Through a Homewise Home For Life Plan people aged 60+ can secure this property for up to 59% less, by purchasing a Lifetime Lease.



10831030/20240412/JB/PJ