

**OVER 60?**

Secure this property  
for up to **59% less!**



**Price**

**£825,000**

**Freehold**

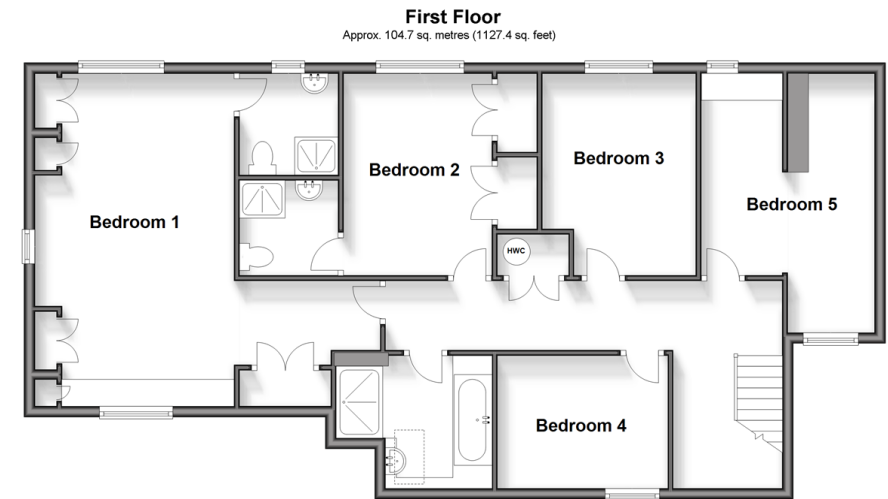
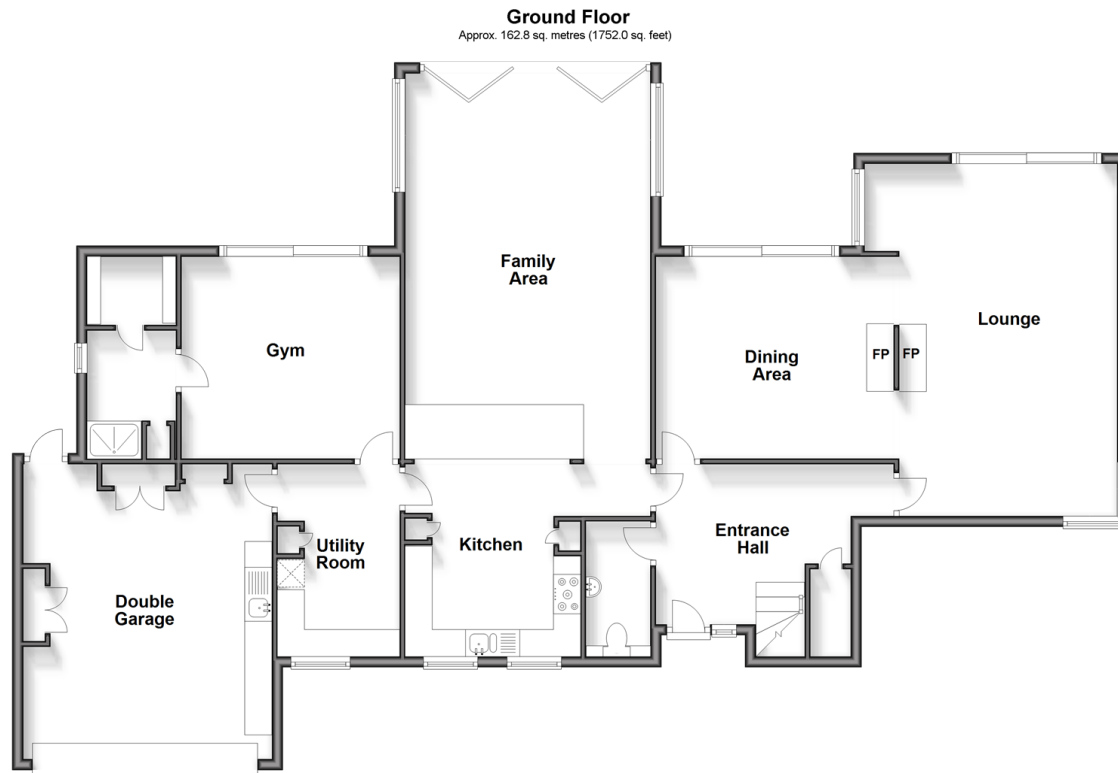
5x  3x  3x 

Russett Avenue, Faversham, Kent, ME13

*Wards*

Helping you move forwards





## Accommodation

### GROUND FLOOR

Entrance Hall

Cloakroom

Lounge: 21'10 (6.66m) narrowing to 15'7 maximum (4.75m) x 13'10 (4.22m)

Dining Area: 14'6 x 12'3 (4.42m x 3.74m)

Kitchen: 12'1 x 10'6 (3.69m x 3.20m)

Family Area: 19'10 x 11'6 (6.05m x 3.51m)

Gym: 13'3 x 12'2 (4.04m x 3.71m)

Shower/Sauna Room

Utility Room: 11'7 x 7'4 (3.53m x 2.24m)

### FIRST FLOOR

Landing

Bedroom 1: 20'3 x 12'8 (6.18m x 3.86m)

En-suite Shower room

Bedroom 2: 12'3 x 9'3 (3.74m x 2.82m)

En-suite Shower Room

Bedroom 3: 12'3 x 9'2 (3.74m x 2.80m)

Bedroom 4: 10'0 x 7'11 (3.05m x 2.41m)

Bedroom 5: 15'3 max x 10'11 (4.65m x 3.33m)

Family Bathroom

### OUTSIDE

Front Garden

Rear Garden

Integral Double Garage



## Main features

- Substantial detached family home of individual design
- Extended to provide unrivalled accommodation
- Exceptional ground floor space
- Sought after location with easy access to the town centre and mainline station
- Additional parking



### Nearest Schools

Primary Schools: Ethelbert Road Infant School 1.2 miles, Ospringe C of E Primary 1.6 miles

Secondary Schools: The Abbey School 1.2 miles, Queen Elizabeth's Grammar School 2.1 miles



### Transport Information

Train Stations: Faversham 2.0 miles, Selling 3.6 miles, Teynham 5.3 miles



### Address

Russett Avenue, Faversham, Kent, ME13



### Directions

For directions to this property please contact us.





*Wards*  
Helping you move forwards

Call Faversham Branch 01795 535517 ■ [wardsof Kent.co.uk](http://wardsof Kent.co.uk)



- Legal advice should be taken to verify fixtures/fittings, planning, alterations and/or lease details
- Appliances & services are untested, dimensions are approximate and floor plans are not to scale
- Through a Homewise Home For Life Plan people aged 60+ can secure this property for up to 59% less, by purchasing a Lifetime Lease.



EPC RATING  
CURRENT: **D(67)** POTENTIAL: **C(76)**

10826233/20240219/JB/PJ