



Guide Price
£325,000

Freehold

3x  2x  1x 

**Finch Close, Faversham,
Kent, ME13**

OVER 60?

Secure this property
for up to **59% less!**

Wards
Helping you move forwards



Main features

- Modern family home located in desirable location
- Easy walk to station, town centre and local schools
- Lovely conservatory addition leading from the Lounge
- Manageable gardens
- Well maintained throughout

Accommodation

GROUND FLOOR

Entrance Hall

Cloakroom

Lounge: 15'1 x 14'11 (4.60m x 4.55m)

Kitchen: 10'3 x 8'2 (3.13m x 2.49m)

Conservatory: 13'3 x 7'4 (4.04m x 2.24m)

FIRST FLOOR

Landing

Bedroom 1: 12'9 x 8'7 (3.89m x 2.62m)

En-suite Shower Room

Bedroom 2: 8'6 x 8'3 (2.59m x 2.52m)

Bedroom 3: 9'5 x 6'3 (2.87m x 1.91m)

Bathroom

OUTSIDE

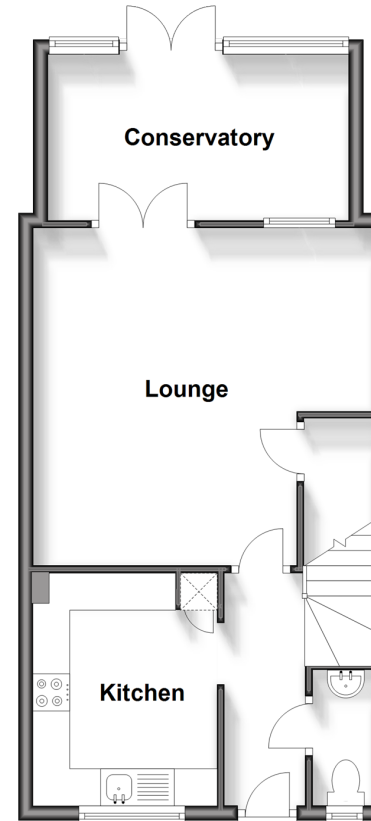
Front Garden

Rear Garden

Parking for 2 cars

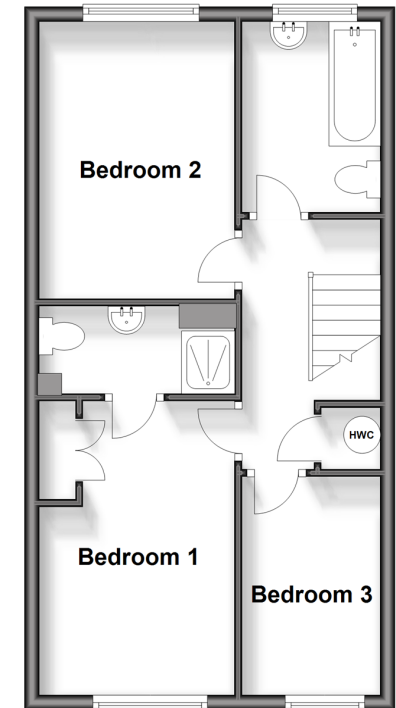
Ground Floor

Approx. 45.7 sq. metres (492.0 sq. feet)



First Floor

Approx. 42.1 sq. metres (453.3 sq. feet)



Call Faversham - 01795 535517 ■ wardsokent.co.uk

- Legal advice should be taken to verify fixtures/fittings, planning, alterations and/or lease details
- Appliances & services are untested, dimensions are approximate and floor plans are not to scale
- Through a Homewise Home For Life Plan people aged 60+ can secure this property for up to 59% less, by purchasing a Lifetime Lease.



10831945/20240813/HR/PJ