



Price
£450,000

Freehold

3x  1x  2x 

**Edith Road, Faversham,
Kent, ME13**

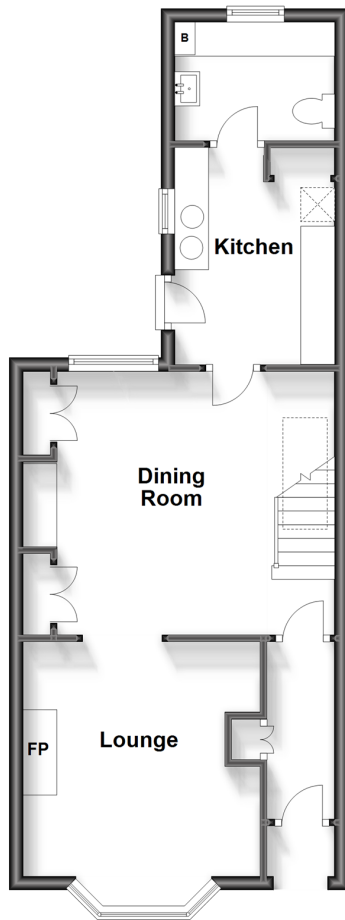
OVER 60?

Secure this property
for up to **59% less!**

Wards
Helping you move forwards

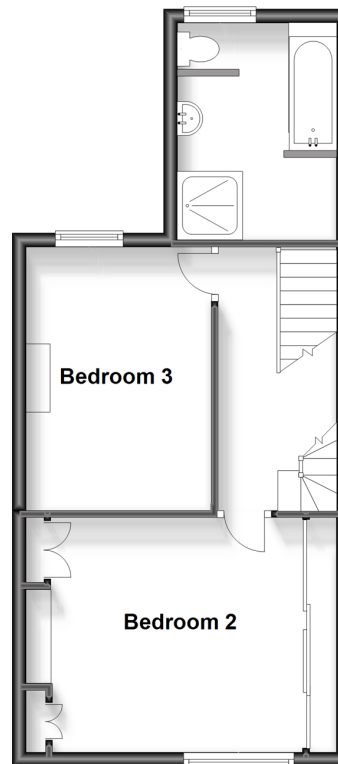
Ground Floor

Approx. 45.3 sq. metres (488.0 sq. feet)



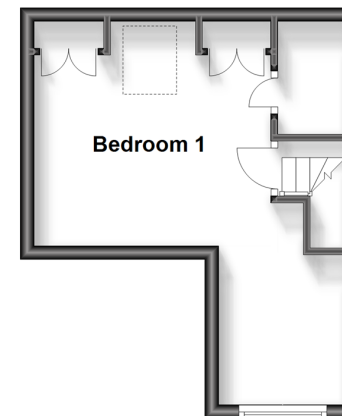
First Floor

Approx. 41.7 sq. metres (448.6 sq. feet)



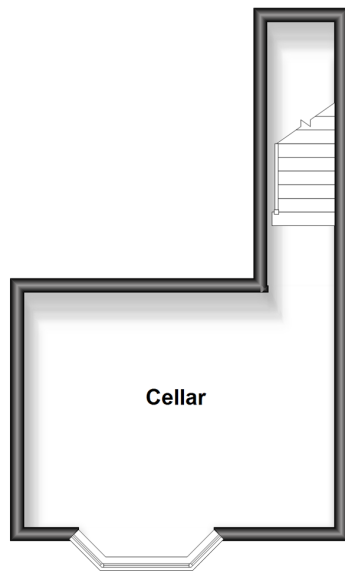
Second Floor

Approx. 19.5 sq. metres (209.4 sq. feet)



Basement

Approx. 20.0 sq. metres (215.0 sq. feet)



Accommodation

GROUND FLOOR

Entrance Hall

Lounge : 13'6 x 11'4 (4.12m x 3.46m)

Dining Room: 14'11 x 12'8 (4.55m x 3.86m)

Kitchen: 10'5 x 7'5 (3.18m x 2.26m)

Utility/Cloakroom: 6'0 x 5'8 (1.83m x 1.73m)

BASEMENT

Cellar: 11'10 x 11'2 (3.61m x 3.41m)

FIRST FLOOR

Landing

Bedroom 2: 12'9 up to fitted wardrobes x 11'2 (3.89m x 3.41m)

Bedroom 3: 12'8 x 9'5 (3.86m x 2.87m)

Bathroom

SECOND FLOOR

Bedroom 1: 14'11 x 11'11 minimum (4.55m x 3.63m)

OUTSIDE

Rear Garden



Main features

- Substantial Victorian house in central location
- Traditional layout with lounge and separate dining room
- Useful cellar plus utility room/cloakroom
- Short walk to mainline station and easy access to the A2/M2
- Newly fitted kitchen and bathroom



Nearest Schools

Primary Schools: Ethelbert Road Infant School 0.4 miles, Ospringe C of E Primary 0.9 miles

Secondary Schools: The Abbey School 0.4 miles, Queen Elizabeth's Grammar School 1.1 miles



Transport Information

Train Stations: Faversham 0.4 miles, Selling 3.8 miles, Teynham 4.6 miles



Address

Edith Road, Faversham, Kent, ME13



Directions

For directions to this property please contact us.



Wards
Helping you move forwards

Call Faversham Branch 01795 535517 ■ wardsof Kent.co.uk



- Legal advice should be taken to verify fixtures/fittings, planning, alterations and/or lease details
- Appliances & services are untested, dimensions are approximate and floor plans are not to scale
- Through a Homewise Home For Life Plan people aged 60+ can secure this property for up to 59% less, by purchasing a Lifetime Lease.



10831823/20240210/PJ/PJ