



Price
£615,000

Freehold

5x  3x  2x 

**Jenetting Close,
Faversham, Kent, ME13**

OVER 60?

Secure this property
for up to **59% less!**

Wards
Helping you move forwards



Main features

- Immaculate detached house in cul de sac location on the popular Perry Court development
- Open plan living with doors leading out onto the garden
- Double garage and driveway
- Stunning views of the bridal path
- 8 years left on NHBC warranty

Accommodation

GROUND FLOOR

Entrance Hall
 Lounge: 22'0 x 12'0 (6.71m x 3.66m)
 Cloakroom
 Dining Room: 13'0 x 10'0 (3.97m x 3.05m)
 Kitchen/Breakfast Room: 19'0 x 16'0 (5.80m x 4.88m)
 Utility Room

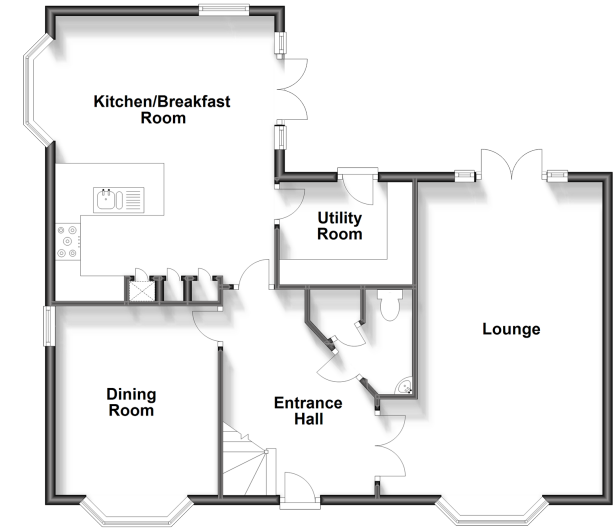
FIRST FLOOR

Landing
 Bedroom 1: 14'0 up to fitted wardrobes x 11'0 (4.27m x 3.36m)
 En-Suite Shower Room
 Bedroom 2: 12'9 x 10'6 (3.89m x 3.20m)
 En-Suite Shower Room
 Bedroom 3: 12'0 up to fitted wardrobes x 8'2 (3.66m x 2.49m)
 Bedroom 4: 9'8 up to fitted wardrobes x 8'6 (2.95m x 2.59m)
 Bedroom 5/Study: 9'4 x 7'9 (2.85m x 2.36m)
 Bathroom

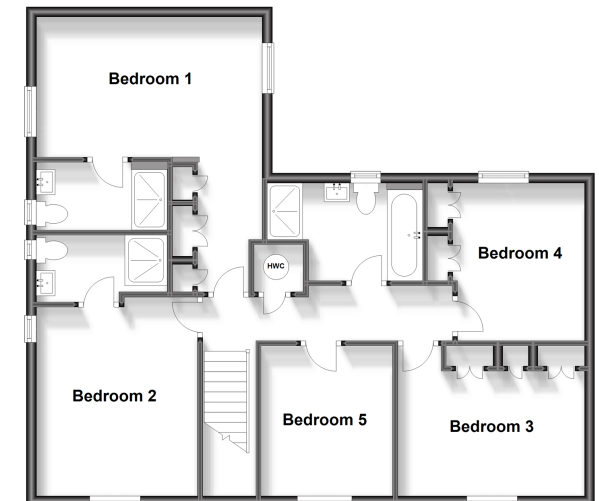
OUTSIDE

Front & Rear Garden
 Double Garage
 Driveway

Ground Floor
 Approx. 82.1 sq. metres (884.0 sq. feet)



First Floor
 Approx. 81.8 sq. metres (880.1 sq. feet)



Call Faversham - 01795 535517 ■ wardsof Kent.co.uk

- Legal advice should be taken to verify fixtures/fittings, planning, alterations and/or lease details
- Appliances & services are untested, dimensions are approximate and floor plans are not to scale
- Through a Homewise Home For Life Plan people aged 60+ can secure this property for up to 59% less, by purchasing a Lifetime Lease.



10831831/20230925/HR/MW