



Guide Price
£325,000

Freehold

2x  1x  1x 

**Riverside, Eynsford,
Kent, DA4**

OVER 60?

Secure this property
for up to **59% less!**

Wards
Helping you move forwards



Main features

- Terraced property with riverside views
- Prime village location close to local amenities and schools
- Short walk to Eynsford station
- Beautiful Grade II listed Tudor style cottage
- Private rear garden and off-road parking

Accommodation

SPLIT LEVEL GROUND FLOOR

Lounge: 17'10 x 13'5 (5.44m x 4.09m)

Kitchen: 8'2 x 5'11 (2.49m x 1.80m)

FIRST FLOOR

Landing

Bedroom 1: (L-shaped) 10'3 x 10'3 (3.13m x 3.13m) plus 5'2 x 3'2 (1.58m x 0.97m)

Bedroom 2: 10'0 x 6'6 (3.05m x 1.98m)

Bathroom: 6'3 x 5'5 (1.91m x 1.65m)

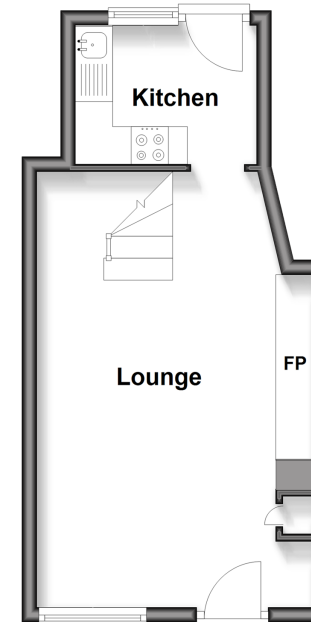
OUTSIDE

Off-Road Parking

Rear Garden

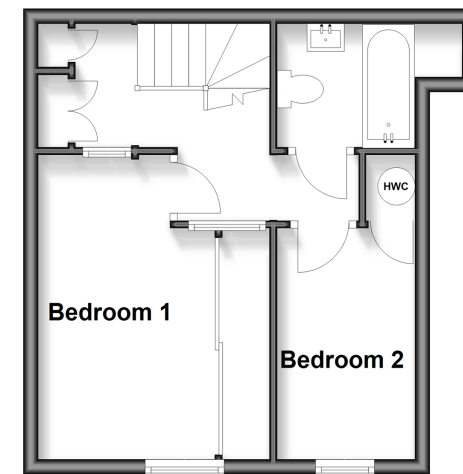
Split Level Ground Floor

Approx. 25.5 sq. metres (274.9 sq. feet)



First Floor

Approx. 29.9 sq. metres (321.8 sq. feet)



Call Eynsford - 01322 862844 ■ wardsofkent.co.uk

- Legal advice should be taken to verify fixtures/fittings, planning, alterations and/or lease details
- Appliances & services are untested, dimensions are approximate and floor plans are not to scale
- Through a Homewise Home For Life Plan people aged 60+ can secure this property for up to 50% less, by purchasing a Lifetime Lease.



12520315/20251027/MC/SJ