



Guide Price
£400,000

Freehold

2x  1x  1x 

**Malt Shovel Cottages,
Station Road, Eynsford,
Kent, DA4**

OVER 60?

Secure this property
for up to **59% less!**

Wards
Helping you move forwards



Main features

- Short walk to Eynsford train station with direct links to London
- Large garden
- Off-road parking
- Central village location close to local amenities
- 2 well proportioned bedrooms

Accommodation

GROUND FLOOR

Lounge/Diner: 21'3 x 13'1 (6.48m x 3.99m)

Kitchen: 17'2 x 10'11 (5.24m x 3.33m)

WC: 8'7 x 3'3 (2.62m x 0.99m)

FIRST FLOOR

Landing

Bedroom 1: 12'0 x 10'5 (3.66m x 3.18m)

Bedroom 2: 12'4 x 10'4 (3.76m x 3.15m)

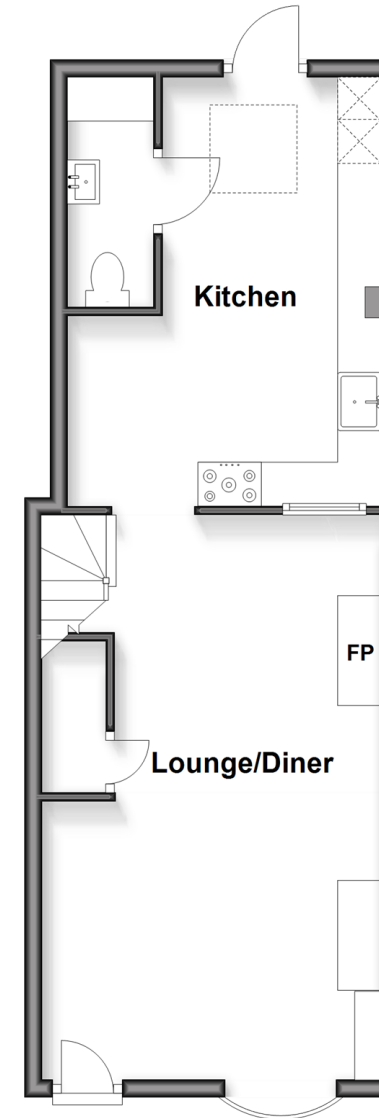
Shower Room: 8'9 x 7'0 (2.67m x 2.14m)

OUTSIDE

Off-Road Parking
Rear Garden

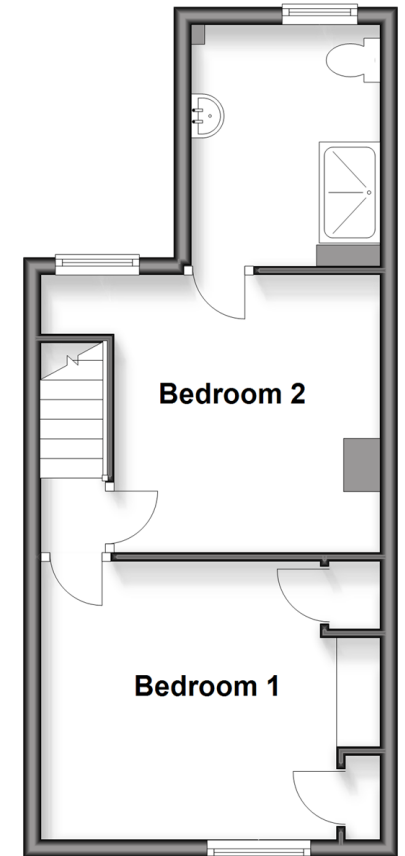
Ground Floor

Approx. 41.0 sq. metres (441.8 sq. feet)



First Floor

Approx. 31.2 sq. metres (335.9 sq. feet)



Call Eynsford - 01322 862844 ■ wardsofkent.co.uk

- Legal advice should be taken to verify fixtures/fittings, planning, alterations and/or lease details
- Appliances & services are untested, dimensions are approximate and floor plans are not to scale
- Through a Homewise Home For Life Plan people aged 60+ can secure this property for up to 50% less, by purchasing a Lifetime Lease.



12520322/20251020/MC/SJ