



OVER 60?

Secure this property
for up to **59% less!**

Price

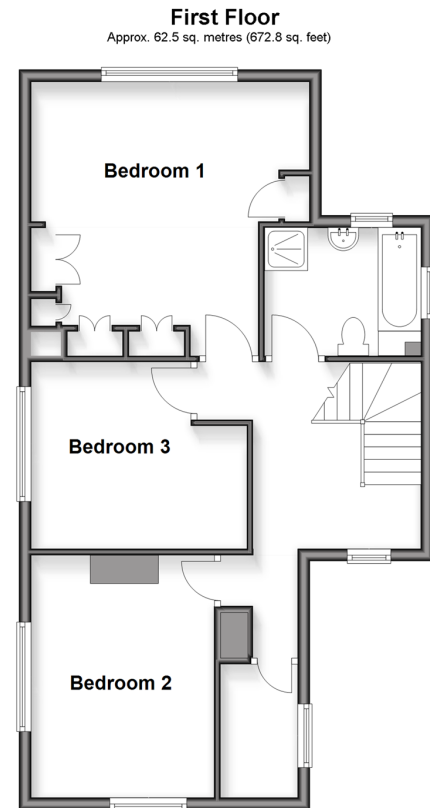
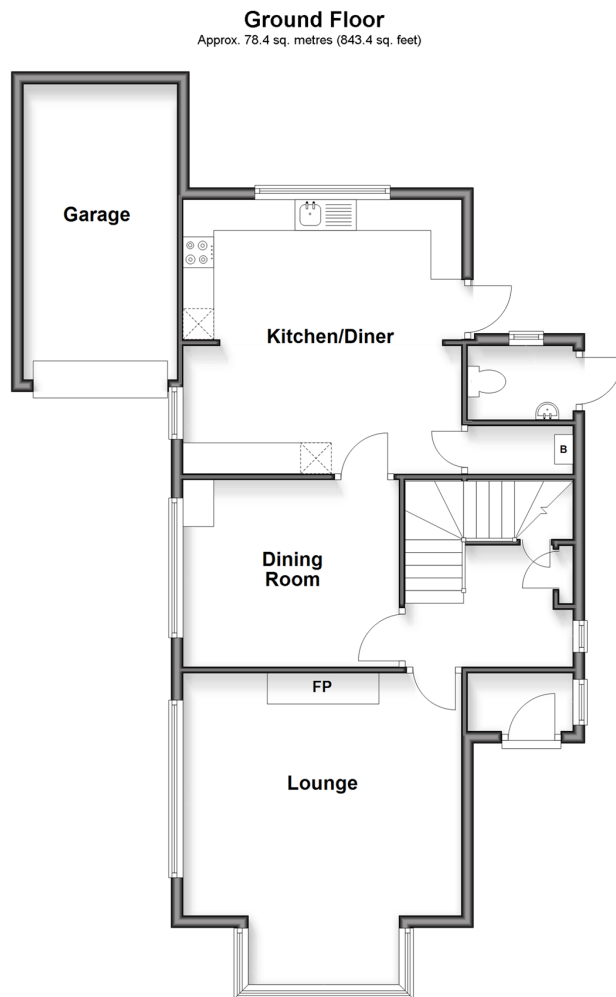
£750,000

Freehold

3x  1x  2x 

**Beesfield Lane,
Farningham, Dartford,
Kent, DA4**

Wards
Helping you move forwards



Accommodation

GROUND FLOOR

Hallway: 10'1 x 9'1 (3.08m x 2.77m)
 Lounge: 16'8 x 14'11 (5.08m x 4.55m)
 Dining Room: 11'4 x 9'11 (3.46m x 3.02m)
 Kitchen/Diner: 14'11 x 14'8 (4.55m x 4.47m)
 Cloakroom

FIRST FLOOR

Landing
 Bedroom 1: 15'4 x 14'10 (4.68m x 4.52m)
 walk-In Wardrobe: 6'11 x 4'3 (2.11m x 1.30m)
 Bedroom 2: 13'1 x 10'8 (3.99m x 3.25m)
 Bedroom 3: 12'2 x 9'10 (3.71m x 3.00m)
 Bathroom: 8'7 x 6'3 (2.62m x 1.91m)

OUTSIDE

Front Garden
 Driveway
 Rear Garden



Main features

- **CHAIN FREE**
- **Private driveway with parking for several cars**
- **Stunning village location with outstanding countryside views**
- **Close to Anthony Roper primary school**
- **Close to local amenities**



Nearest Schools

Primary Schools: The Anthony Roper Primary 1.0 miles, Horton Kirby C of E Primary 2.8 miles, Crockenhill Primary 2.8 miles

Secondary Schools: Parkwood Hall School 2.6 miles,



Transport Information

Train Stations: Eynsford 1.6 miles, Farningham Road 2.3 miles, Longfield 3.4 miles



Address

Beesfield Lane, Farningham, Dartford, Kent, DA4



Directions

For directions to this property please contact us.



Call Eynsford Branch 01322 862844 ■ wardsofkent.co.uk



- If buying to let, the energy rating will need to be improved to at least 'E' rating before you can let the property
- Appliances & services are untested, dimensions are approximate and floor plans are not to scale

- Legal advice should be taken to verify fixtures/fittings, planning, alterations and/or lease details
- Through a Homewise Home For Life Plan people aged 60+ can secure this property for up to 50% less, by purchasing a Lifetime Lease.

12520171/20250915/MC/MF