



**Modern
Auction**

**£220,000
Freehold**

2x  1x  1x 

**Elizabeth Place, High
Street, Eynsford, Kent,
DA4**

Wards
Helping you move forwards



Main features

- Mid-terraced cottage in idyllic location
- Perfect for first-time buyers or buy-to-let investors
- For sale by Modern Auction - T&C's apply
- Subject to an undisclosed Reserve Price
- Buyer's fees apply

Accommodation

GROUND FLOOR

Lounge: 11'4 x 10'9 (3.46m x 3.28m)

Kitchen: 10'8 x 9'5 (3.25m x 2.87m)

SPLIT LEVEL FIRST FLOOR

Landing

Bedroom 1: 11'4 x 10'10 (3.46m x 3.30m)

Bedroom 2: 6'10 x 5'11 (2.08m x 1.80m)

Bathroom: 9'3 x 4'2 (2.82m x 1.27m)

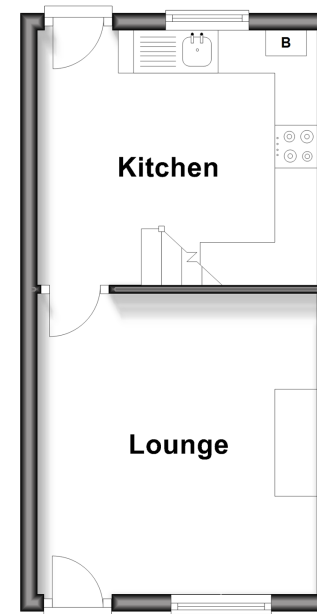
OUTSIDE

Front Garden

Rear Garden

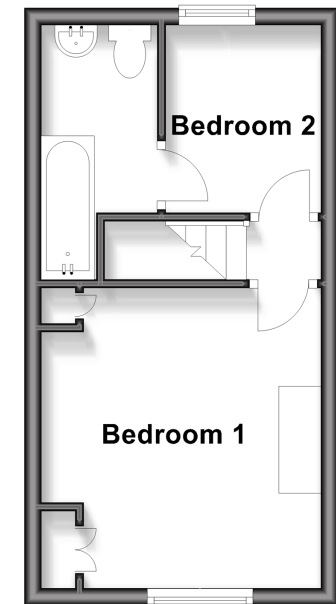
Ground Floor

Approx. 21.8 sq. metres (234.6 sq. feet)



Split Level First Floor

Approx. 21.8 sq. metres (234.6 sq. feet)



Call Eynsford - 01322 862844 ■ wardsofkent.co.uk

■ Legal advice should be taken to verify fixtures/fittings, planning, alterations and/or lease details

■ Appliances & services are untested, dimensions are approximate and floor plans are not to scale



12520070/20251021/SJ/SJ